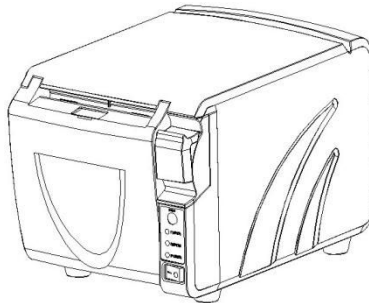
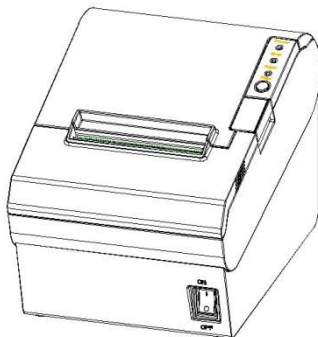

Desktop POS Printer

TP801/TP805/TP806

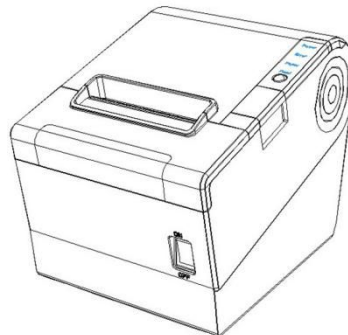
User Manual



TP801



TP805



TP806

Xiamen Hanin Electronic Technology Co.,Ltd.

ADD: Room 305A,Angye Building, Pioneering Park,
Torch High-tech Zone, Xiamen, China 361009

Tel: +86-(0)592-5885993

Fax: +86-(0)592-5885992

Web: www.hpert.com

CONTENTS

Statement.....	1
Important Safety Instructions.....	2
POS printer packing-case.....	3
1 Overview.....	4
1.1 Introductions.....	4
1.2 The main features.....	4
2 Specification.....	5
2.1 Printer specification.....	5
2.2 Printing media specification.....	7
2.2.1 Continuous thermal paper specification.....	7
2.2.2 Notices.....	7
2.3 Printing and cutting position.....	8
2.3.1 Printing position.....	8
2.3.2 Cutting position.....	8
3 Printer Components.....	9
3.1 Appearance and component.....	9
3.1.1 TP801.....	9
3.1.2 TP805.....	9
3.1.3 TP806.....	10
3.2 Specification of Indicated light and beeper.....	12
4 Printer Packing.....	13
4.1 Open packing.....	14
4.2 Choice installation site and direction of printer.....	14
4.3 Connect the printer power adapter.....	14
4.4 Connecting the Interface Cable.....	15
4.5 Connecting the Cash Drawer.....	15
4.6 Roll paper installation.....	15
4.6.1 Confirmation of printing paper.....	16
4.6.2 TP801/TP805/TP806 installation/Change Paper.....	16
4.7 Setting DIP switch.....	18
4.7.1 Serial interface (RS-232C)	19
4.7.2 Interfaces of parallel,USB,Bluetooth and Ethernet.....	19
4.7.3 Auto cutter enable/disable selection.....	20
4.8 Print self testing.....	20
4.9 Installation of Windows driver.....	20

4.9.1 The driver installation instruction of USB /serial port /parallel interface (Windows XP).....	21
4.9.2 The driver installation instruction of Ethernet and Wi-Fi.....	23
4.9.3 Parameters checking and resetting illustration of the Ethernet and Wi-Fi cards.....	26
4.9.4 Setting of Ethernet IP.....	27
4.9.5 Wi-Fi settings.....	31
4.10 Bluetooth.....	42
5 Interfaces Signal.....	43
5.1 Parallel interface.....	44
5.2 USB interface.....	45
5.3 Power Supply interface definition.....	45
5.4 Cash Drawer interface signal.....	45
5.5 Serial interface and Ethernet interface.....	46
6 Troubleshooting.....	48
6.1 Printer not working.....	49
6.2 LED indicator on the control panel and beeper alarm.....	49
6.3 Troubles occur during printing.....	49
6.4 Problems emerge during the paper cutting processes.....	49
6.5 Removing Jammed Paper.....	50

Statement

This manual content may be altered without permission, and Xiamen Hanin Electronic Technology Co., Ltd. reserves the rights to make changes without notice in technology, spare parts, hardware and software of the products. If more information is needed about the products, please contact Xiamen Hanin Electronic Technology Co., Ltd. Without any written permission from the company, any section of this manual is prohibited to be copied or transferred in any form.

Copyright

This manual is printed in 2014, the copyright belongs to Xiamen Hanin Electronic Technology Co. Ltd.

Printed in China

2.0 Version

Warnings :



This must be complied with in order to avoid any damage to the human body and to the equipment.



This is showing the important information and tips for the printer operating.

Important Safety Instructions

1. Safety warning



Warnings: The print head will become very hot during printing; avoid contact with the print head after printing has finished.



Warnings: Do not touch the printer head and connector in case static damage the printer head.

2. Instructions

Read the following instructions thoroughly before starting up your printer.

- 1) Place the printer on a solid and even base so that it cannot fall.
- 2) Leave enough space around printer for operation and maintenance.
- 3) Keep all liquids away from the printer.
- 4) Do not expose the printer to high temperatures, direct sunlight or dust.
- 5) Protect the printer from shock, impact and vibration.
- 6) Ensure the printer is connected to a socket with the correct mains voltage.
- 7) Switch off the printer power supply when won't use it for a long time.
- 8) To ensure the printing quality and reliability, suggest use the recommended paper or the same quality paper.
- 9) Pls switch off the power supply when connect/disconnect all the ports or it will cause damage to the printer control circuit.
- 10) Never carry out maintenance or repair work yourself. Always contact a qualified service technician.
- 11) Keep this User Manual in a place which is easily accessible at all times.

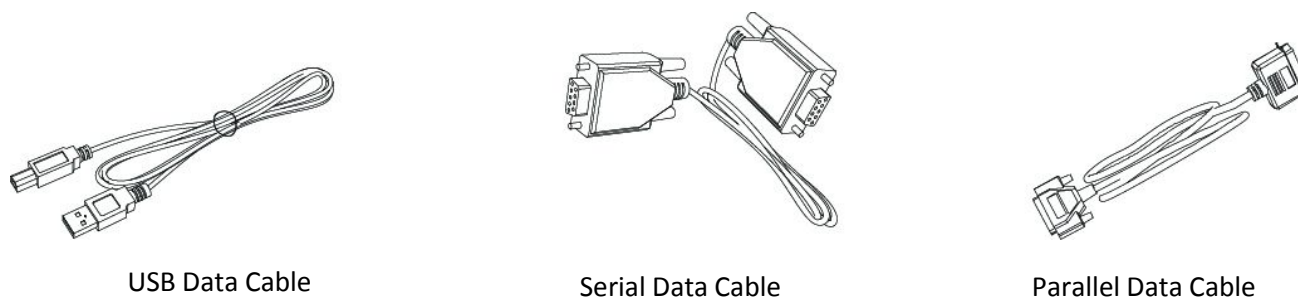
POS printer packing-case

Pls. check you get all in carton.

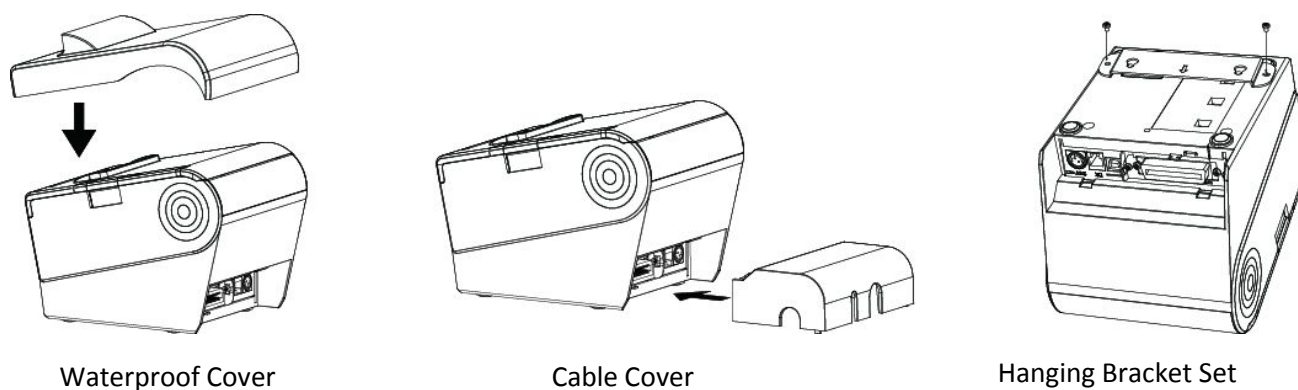
Printer&Accessories :



Optional Accessories(Matching the selected communication interface):



Optional Accessories(TP805/TP806):



1 Overview

1.1 Introductions

TP801/805/806 is a thermal receipt printer with auto-cutter, featured by high printing quality, high printing speed, high stability, etc. It can be used in commercial POS system, food industry and occasions which need real-time field print receipts.

TP801/805/806 can connect with other equipment through parallel, serial, USB, and Ethernet Wi-Fi interfaces. And the printer drivers are available for the WINDOWS XP/WINDOWS 7 32 bit/WINDOWS 7 64bit operating system.

1.2 The main features

- 1) Automatic paper cutting
- 2) Low noise
- 3) High printing speed
- 4) Easy paper loading
- 5) User convenient maintenance
- 6) Compatible with various width paper
- 7) Cash drawer interface
- 8) Communication interfaces optional

2 Specification

2.1 Printer specification

Table2-1 General Specification

(1/2)

Model		TP801	TP805	TP806
Printing Parameter	Print method	Direct thermal line printing		
	Resolution	203dpi , 8dots/mm		
	Printing width	72mm/48mm		
	Print speed	200 ~ 300mm/s	200 ~ 250mm/s	250 ~ 300mm/s
	Interface	Serial, Parallel, Ethernet, USB,Cash drawer,Bluetooth,Wi-Fi		
	Print density	Adjustable from level 1 to level 4		
Page Mode		support		
Memory	RAM	1Mb		
	Flash	4Mb		
Fonts	Chinese	GB18030 24×24,16×16 (Simplified/Traditional Chinese)		
	Alphanumeric	ASC II 9×17,12×24.		
	User-defined	support		
	Code page	Optional international character sets : ([PC437 (USA: Standard Europe)]、[ISO8859-15 (Latin9)]、[Katakana]、[WPC1250]、 [PC850 (Multilingual)]、[WPC1251(Cyrillic)]、[PC860 (Portuguese)]、[WPC1253]、 [PC863 (Canadian-French)]、[WPC1254]、[PC865 (Nordic)]、[WPC1255]、 [PC857(Turkish)]、[WPC1256]、[PC737 (Greek)]、[WPC1257]、[ISO8859-7 (Greek)]、[WPC1258]、[WPC1252]、MIK[Cyrillic /Bulgarian]、[PC866 (Cyrillic #2)]、 CP755 [EastEurope]、[Latvian 2]、[PC852 (Latin 2)]、[Iran]、[PC858 (Euro)]、[Iran II]、 [KU42]、[Latvian]、[TIS11 (Thai)]、ISO-8859-1 [West Europe]、[TIS18 (Thai)]、ISO- 8859-3[Latin3]、[PC720]]、ISO-8859-4[Baltic]、[WPC775]、ISO-8859-5[Cyrillic]、[PC855 (Cyrillic)]、ISO-8859-6[Arabic]、[PC862 (Hebrew)]、ISO-8859-8[Hebrew]、[PC864 (Arabic)]、[ISO-8859-9[Turkish]、[ISO8859-2 (Latin2)]、[PC856]、[ABICOMP]]		
Graphics		Support varied density bitmap as and download bitmap printing Max size of each bitmap is 40K, the total size of bitmap is 256k		
Barcode	1D	UPC-A、UPC-E、EAN8、EAN13、CODE39、ITF、CODEBAR、CODE128、CODE93		
	2D	PDF417、QR code		
Detect Function	Sensors	Paper end, paper near end, take paper cutter jam and cover open sensors	Paper end,cutter jam and cover open sensors	Paper end, paper near end, paper jam,cutter jam and cover open sensors

Table2-1 General Specification (Continued)

(2/2)

Model		TP801	TP805	TP806
LED Indicator	Power LED	Green LED	Green LED	Green LED
	Paper LED	Blue LED	Red LED	Red LED
	Error LED	Red LED	Red LED	Red LED
	Status LED	Multicolor LED		
Power Supply		External power adapter		
	Input	AC100V-240V 50-60HZ		
	Output	24V — — 2A		
Paper	Paper type	Specified Thermal Paper		
	Paper width	80 ⁺⁰ ₋₁ mm/ 58 ⁺⁰ ₋₁ mm		
	Paper thickness	0.065~0.090mm		
	Roll paper diameter	Max. OD φ83mm		
	Paper load	Forward cover open and Easy paper loading	Upward cover open and Easy paper loading	
	Paper cut	Manual tear or Auto-cutter		
Command		ESC/POS		
Physical Spec.	Operating condition	0℃ ~ 40℃ , 20% ~ 85%RH		
	Storage condition	-20℃ ~ 70℃ , 5% ~ 95%RH		
	Dimensions L*W*H	190*127*126mm	195*147*147mm	197*145*146mm
	Weight	1.63kg	1.8kg	1.8kg
Reliability	TPH lifetime	150km		
	Cutter lifetime	2,000,000 cuts		
	MTBF	360, 000 hours		
Software Function	Driver program	Windows (Win7/Win8/Vista/XP/2000)		

2.2 Printing media specification

2.2.1 Continuous thermal paper specification

- Paper type: specified thermal paper
- Paper width: 80^{+0}_{-1} mm / 58^{+0}_{-1} mm
- Paper outer diameter : Max. 83 mm.
- Roll paper core: internal diameter: 12mm
Outer diameter: 18mm.
- Paper thickness: 0.065 ~ 0.090mm.

Paper Type	Manufacturer
FD210, PD150R, PD160R	OJI Paper CO., LTD.

2.2.2 Notices

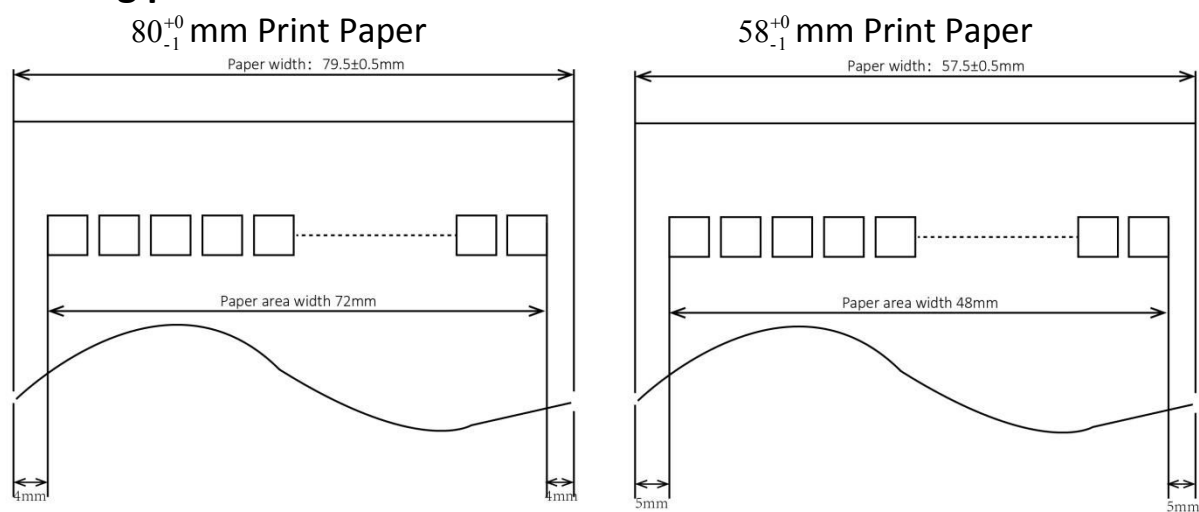


Notes :

- Pls. use the recommended thermal paper or same quality paper, otherwise it will influence the printing quality and decrease the thermal printer head life ;
- Don't stick the paper on the roll paper mandril ;
- If the thermal paper is polluted by chemical or oil, the thermal paper heat sensibility decreases, which will influence the printing quality ;
- Don't use finger nail or hard articles to touch the surface of thermal paper, otherwise it will cause color fading ;
- When the environment temperature is higher than 70°C , the thermal paper color will fade, so pay attention to the influence of temperature, humidity and sunlight.

2.3 Printing and cutting position

2.3.1 Printing position



2.3.2 Cutting position

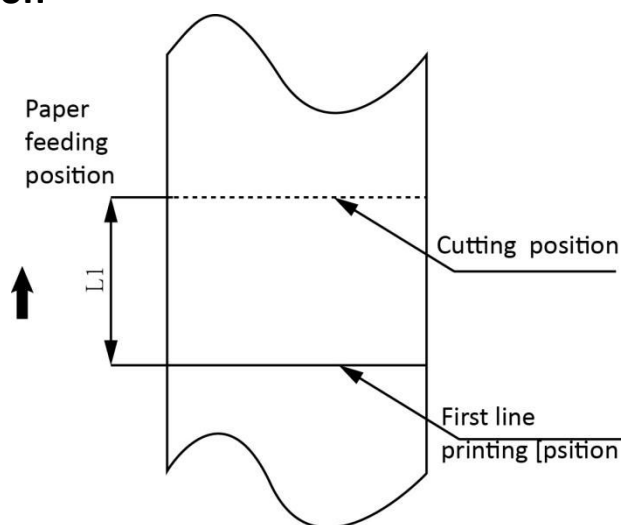


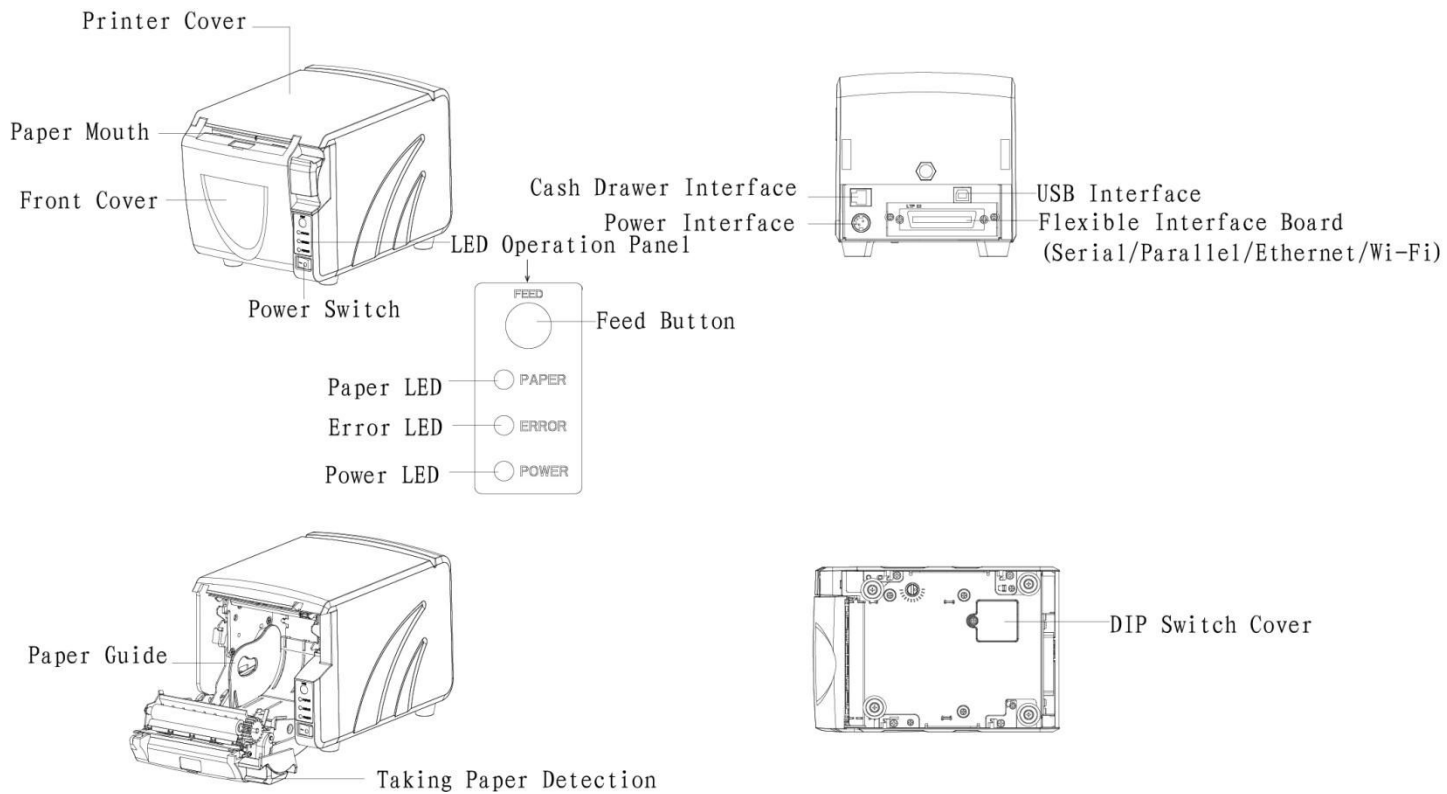
Fig 2.3.2

Type	Paper Cutting Position(L1)
TP801	14.5mm
TP805	11.8mm
TP806	15.4mm

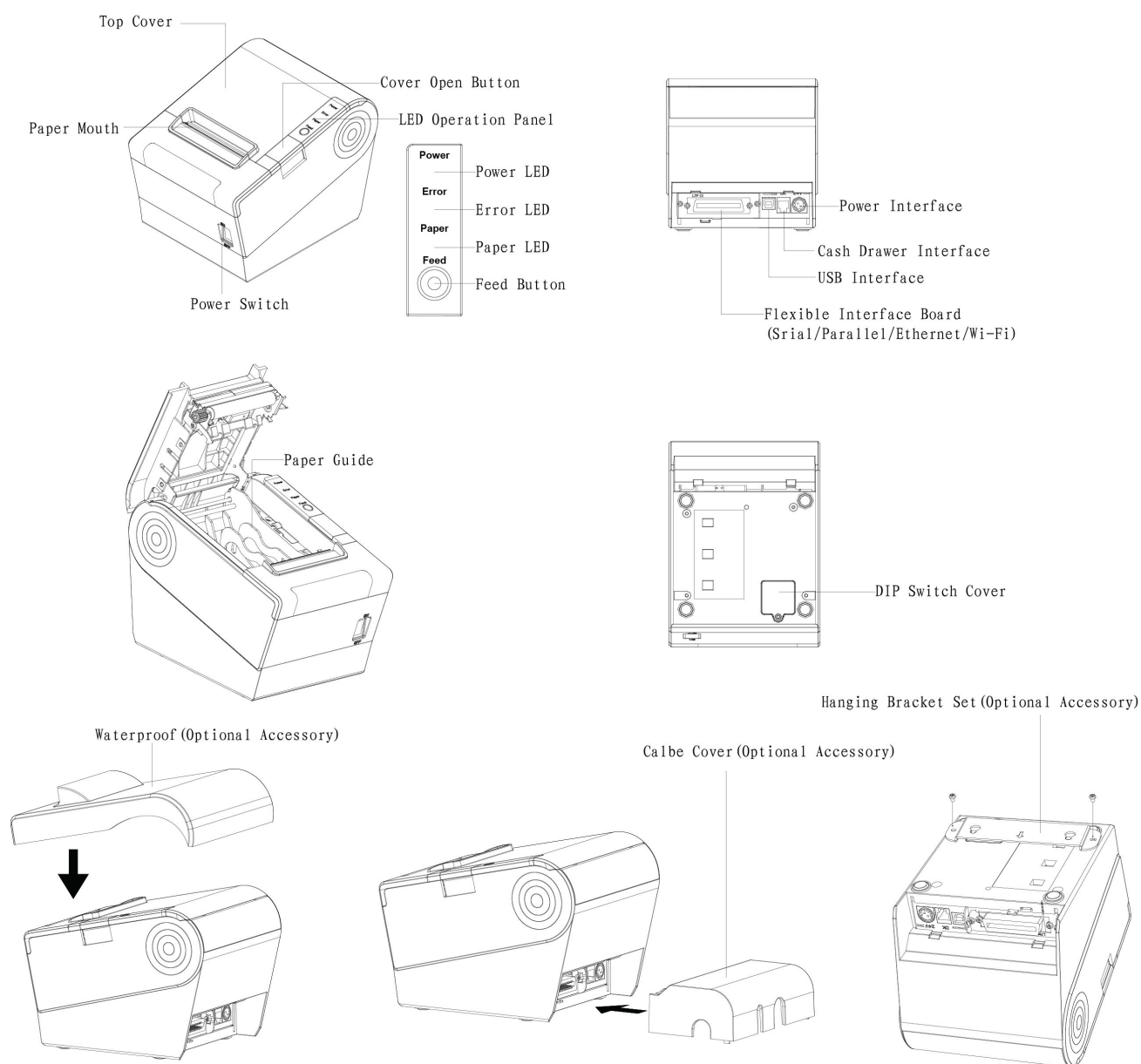
3 Printer Components

3.1 Appearance and component

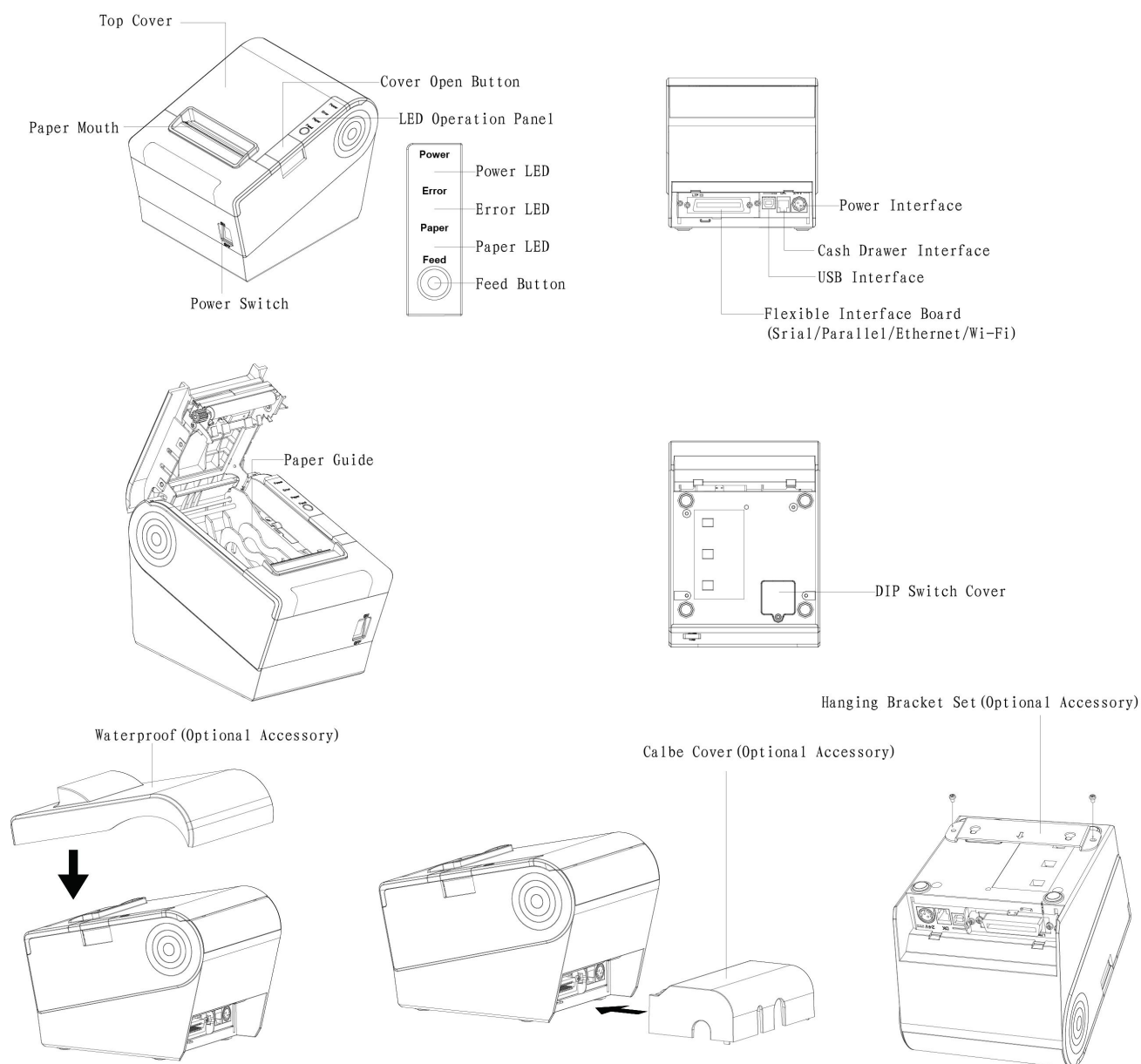
3.1.1 TP801



3.1.2 TP805



3.1.3 TP806



Specification of some part elements

1) Power switch

Press “0” to turn off power and press “1” to turn on power supply.

2) Feed Button

Feed paper: When it's not in the alarm status, push the button to feed paper. Push the button continuously to feed the long distance.

3) Power LED

It indicate the power status.

4) Paper LED

It detect the status of paper, such as paper near end and paper end. See more details in “3.2 Specification of Indicated light and beeper”.

5) Error LED

If there is abnormal phenomenon and error LED flashing, it means the printer is in the wrong status. Please turn off the power immediately.

6) Paper guide

In paper storehouse, paper guide can change the position to adapt to different paper width.

① TP801 storehouse has 3 paper guide slot. paper guide slot 1/3 adapt to 80^{+0}_{-1} mm / 58^{+0}_{-1} mm print paper respectively.

② TP805 storehouse has 4 paper guide slot. paper guide slot 1/4 adapt to 80^{+0}_{-1} mm / 58^{+0}_{-1} mm print paper respectively.

③ TP803 storehouse has 2 paper guide slot. paper guide slot 1/2 adapt to 80^{+0}_{-1} mm / 58^{+0}_{-1} mm print paper respectively.



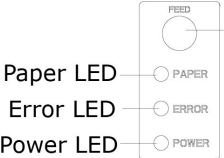
Warnings:

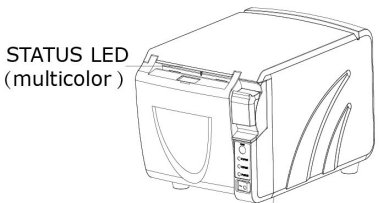
Paper guide is essential to adjusting the paper width. Please keep it properly.

3.2 Specification of Indicated light and beeper

Function specification of Indicated light and beeper

Name	Status	Specification
POWER LED (Green)	ON	The printer work well
	OFF	The printer does not work
ERROR LED (Red)	Flashing	The printer in an error state
	OFF	The printer in an normal state
PAPER LED (TP801 Blue) (TP805/TP806 Red)	TP801 Flashing	The printer in paper end state
	TP805/TP806 ON	
	OFF	The printer in an normal state
STATUS LED	Flashing	The printer in an error state
	ON	The printer in an normal state

	Description	POWER LED	ERROR LED	PAPER LED	Beeper
	Open the cover of printer	ON	ON	ON	"Beep ,Beep—,Beep"
	Full of paper	ON	OFF	OFF	Silent
	No paper	ON	ON	ON	"Beep Beep Beep".
	Paper near end	ON	OFF	ON	Silent
	Cutter jam	ON	Flashing	OFF	"Beep—, Beep—"

 TP801	STATUS LED	Specification
	White	Printer power on
	Green	Printer is ready and in idle condition
	Red	Wrong status(out of paper,cover open,and so on)
	Rose pink	Paper near end and printer is in normal
	Blue	Printer is busy.



Notes:

The printer use a thermistor to detect the temperature of the print head.If the temperature of print head is more than 65° C,printer will send a warning.If the temperature of print head is more than 80° C,printer will stop working until the temperature is in the normal range.

4 Printer Packing

4.1 Open packing

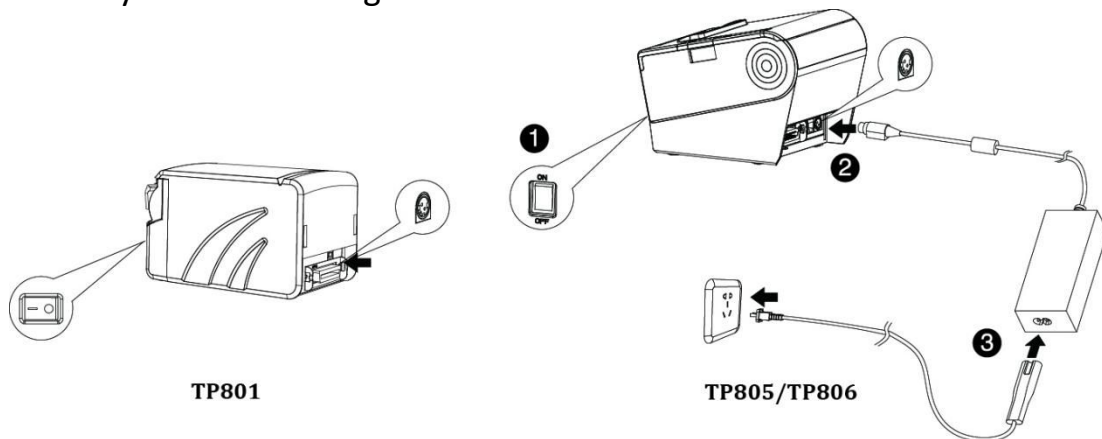
When opening the package, according to the packing list to check if items are missing or damaged, if so, please contact the dealer or manufacturer.

4.2 Choice installation site and direction of printer

- 1) TP805/TP806 have two ways to install: wall-hanging (optional: wall-hanging carrier) and horizontal installation. It's recommend that install the printer at horizontal line.
- 2) The printer should install at a flat and steady place. It's recommend that install the printer at horizontal line. The angle of inclination should not exceed $\pm 10^\circ$ (paper feed direction) if tilt install printer, it does not allow to tilt by other direction.
- 3) Keep printer far away from source of water ;
- 4) Avoid the printer on place where it is vibration and shock
- 5) Ensure printer ground connect is safe ;
- 6) When the printer is at operation and maintenance, it is recommended to retain the enough space to ensure the printer can work in reliability and ease of operation.

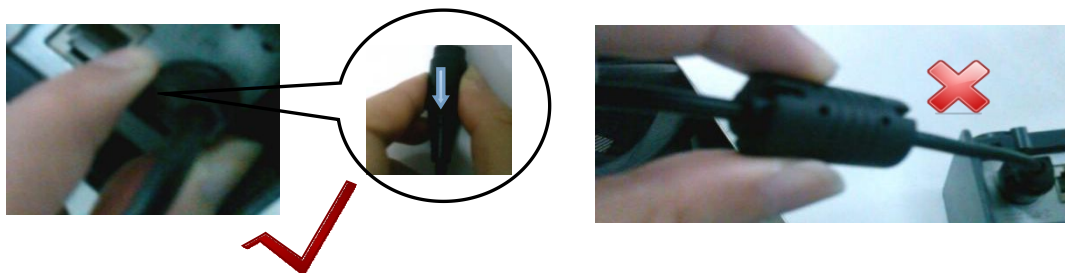
4.3 Connect the printer power adapter

- 1) Make sure the printer's power switch is turned off;
- 2) Put the cable plug of power adapter facing up at flat side, insert the rear of the printer power connector;
- 3) Turn the power adapter input power;
- 4) Pay attention about disconnecting or connect the AC adapter at right method, or likely to cause damage.



The plug of power adapter is designed in a switch type, when accessing power adapter and uttered the voice "click", it means the connected socket switch is locked the adapter connect well, otherwise please connect again .

When pull out the adapter, please pinch the shell of power adapter and pull the switch up, when the switch is fully opened then pull out the power adapter. Don't put forth your strength to pull the plug by squeeze at any of place of power adapter .Because, it is more difficult to pull it out and easy to damage the cable.



Notes :

- ▶ Please only use the power adapter are recommended by supplied or equivalent products;
- ▶ When disconnecting the AC adapter plug, handheld plug connector housing, to avoid the pulling on the cable in force;
- ▶ Avoid drag the power adapter cable, otherwise it will damage the cables, causing fire and shock;
- ▶ Avoid put power adapter around a heating device, otherwise the cable may melt, causing fire and shock;
- ▶ If you do not use the printer in a long time, disconnect the power supply of printer power adapter.

4.4 Connecting the Interface Cable

- 1) Make sure the printer's power switch is turned off;
- 2) Put the interface cable into the matched interface and fixed with screws (or spring) on the plug;
- 3) Connect the other end of the interface cable to the host.

4.5 Connecting the Cash Drawer

- 1) Make sure the printer's power switch is turned off;
- 2) Connect the cash drawer cable into the cash drawer interface on the rear side of the printer.



Warning: Cash drawer interface can only be connected to a voltage of 24V cash drawer device (can't connect to the phone line, etc.)

4.6 Roll paper installation

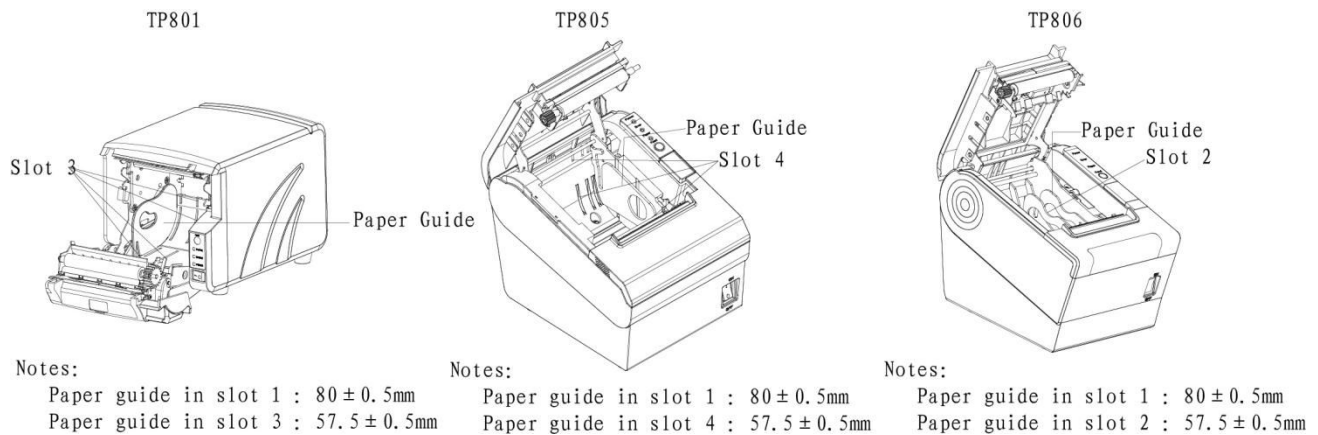
After connecting the power adapter and interface cable, you can install media for printing. Confirm the type of paper used by the printer before printing. The default paper type is specified thermal paper.

Choose the paper guide according to the printing paper.

4.6.1 Confirmation of printing paper

Method:

- 1) Put the finger into the hole in the paper guide, then lift the paper guide.
- 2) According to the paper width, insert the paper guide in the proper position.



4.6.2 TP801/TP805/TP806 installation/Change Paper

- 1) Turn off printer power supply.
- 2) Pressing the open button, open the top cover of TP805\TP806 or front cover of TP801. (Like figure 4.6.1)

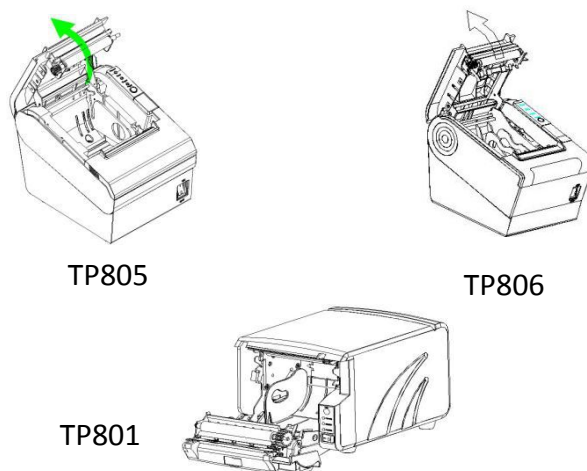


Figure 4.6.1

- 3) Put the paper into printer. Pay attention to the direction of the paper. (Like figure 4.6.2)

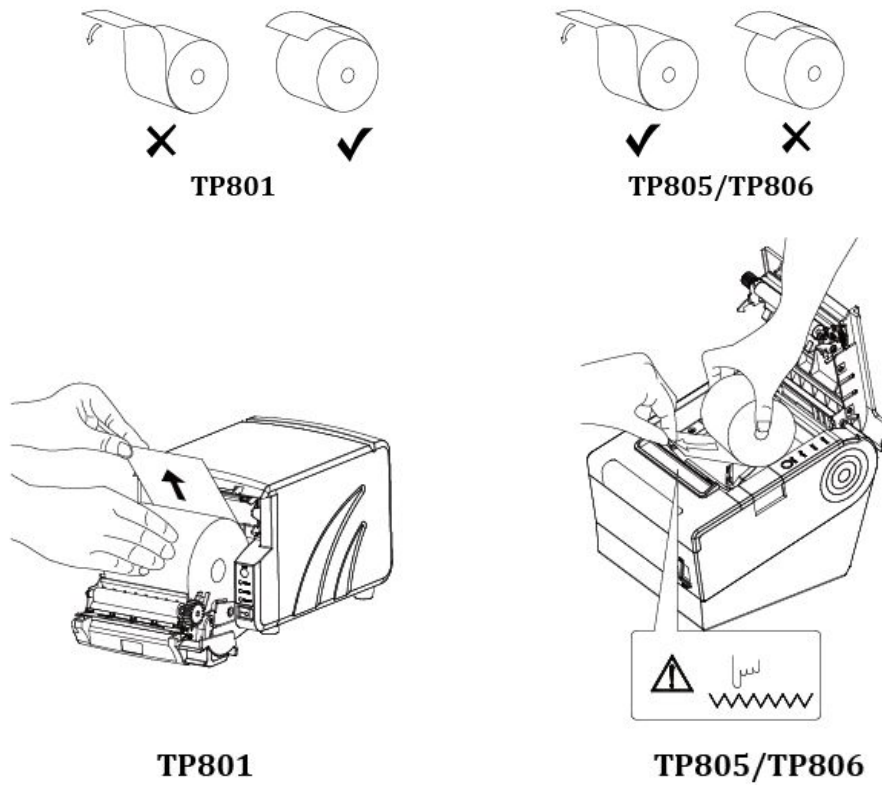


Figure 4.6.2

4) Close the top cover of TP805\TP806 or front cover of TP801. (Like figure 4.6.3)

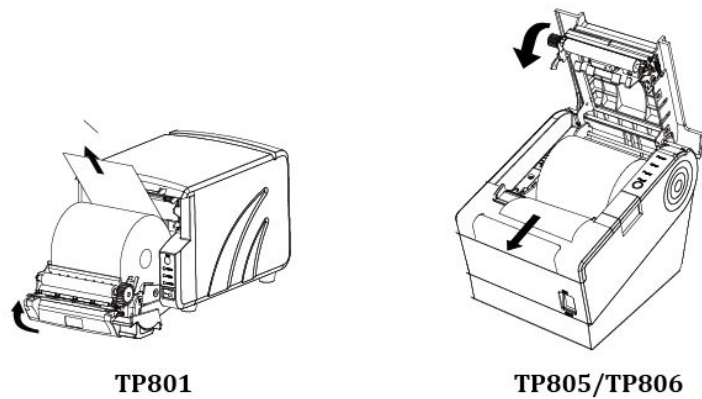
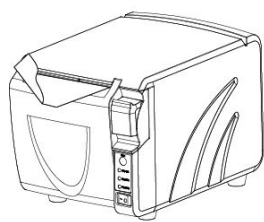
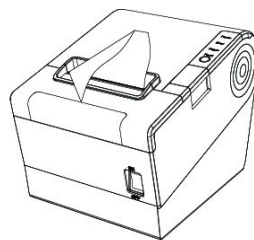


Figure 4.6.3

5) Tear the redundant paper. (Like figure 4.6.4)



TP801



TP805/TP806

Figure 4.6.4



Notes :

- ▶ According to the paper size to adjust the paper guide;
- ▶ Make sure the paper inside is at tight status, or it will tissue paper or other obstacle.

4.7 Setting DIP switch

4.7.1 Serial interface (RS-232C)

DIP switch 1

Switches	Functions	ON	OFF	Default
1-1	Automatic line feed	Enable	Disable	OFF
1-2	Handshake	XON/XOFF	DTR/DSR	OFF
1-3	Bit length	7 bits	8 bits	OFF
1-4	Parity check	Yes	No	OFF
1-5	Parity selection	EVEN	ODD	OFF
1-6	Baud rate selection (bps)	Reference form 1		OFF
1-7				ON
1-8				OFF

DIP switch 2

Switches	Functions	ON	OFF	Default
2-1	Chinese/English mode	English	Chinese	ON
2-2	Internal beeper control	Disable	Enable	OFF
2-3	Auto cutter	Disable	Enable	OFF
2-4	Busy conditions	Receive buffer full	Printer off-line Receive buffer full	OFF
2-5	Printer density	Reference form 2		OFF
2-6				OFF
2-7				OFF
2-8	Near end sensor status	Disable	Enable	OFF

4.7.2 Interfaces of parallel,USB,Bluetooth and Ethernet

DIP switch 1

Switches	Function	ON	OFF	Default
1-1	Automatic line feed	Enable	Disable	OFF
1-2 ~ 1-8	Reserve	-	-	OFF

DIP switch 2

Switches	Functions	ON	OFF	Default
2-1	Chinese/English mode	English	Chinese	ON
2-2	Internal beeper control	Disable	Enable	OFF
2-3	Auto cutter	Disable	Enable	OFF
2-4	Busy conditions	Receive buffer full	Printer off-line Receive buffer full	OFF
2-5	Printer density	Reference form 2		OFF
2-6				OFF
2-7				OFF
2-8	Near end sensor status	Disable	Enable	OFF

Form 1—Baud Rate Selection

Baud rate	1-6	1-7	1-8	Default
2400	ON	OFF	OFF	9600
4800	ON	OFF	ON	
9600	OFF	ON	OFF	
19200	OFF	OFF	OFF	
38400	OFF	ON	ON	
57600	OFF	OFF	ON	
115200	ON	ON	ON	

Form 2—Print density Selection

2-5	2-6	2-7	Printer density	Default
ON	ON	Reserve	1 (diluted)	2
OFF	OFF	Reserve	2	
ON	OFF	Reserve	3	
OFF	ON	Reserve	4 (dense)	

4.7.3 Auto cutter enable/disable selection

DIP Switch setting 2		
Switch2-3	ON	Auto cutter disable
	OFF	Auto cutter enable
Application program	Ignore auto cutter error for continuous printing	

4.8 Print self testing

- 1) Make sure the printer has been installed roll paper and turn off the top cover.
- 2) Make sure the printer has linked power.
- 3) Make sure the printer power off.
- 4) Press and hold FEED button, then turn on power switch, the printer will print out self-test page.

4.9 Installation of Windows driver

Give an example of HPRT TP801, in printer's CD has attached windows driver program, open the driver program and run "DriverSetup.exe".

4.9.1 The driver installation instruction of USB /serial port /parallel interface (Windows XP)

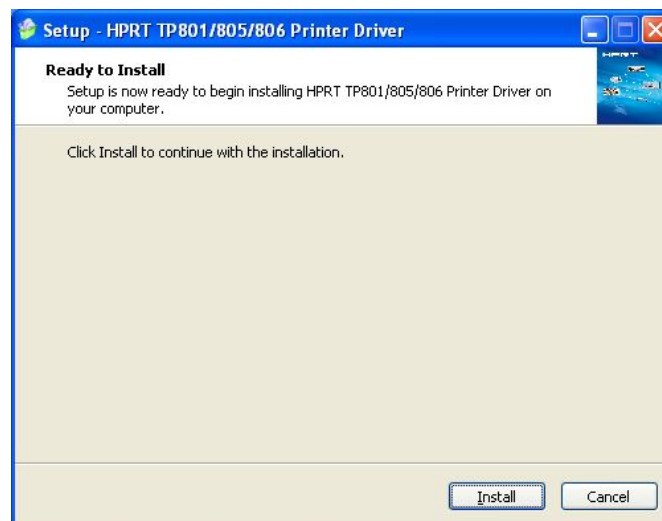


Warning: In different operating system, screen has slight difference. Please operate according to the tips.

1. Double click "HPRTTPPrinterDriver-v-1.0.4.7.exe". Choose "English" and click "OK".



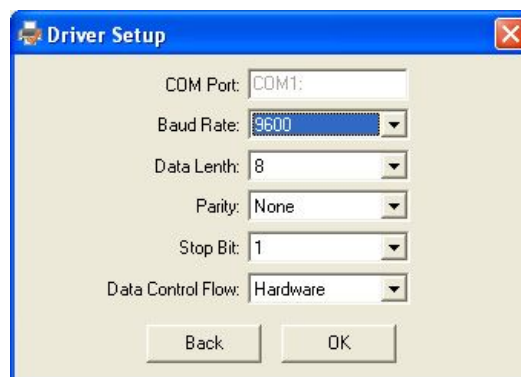
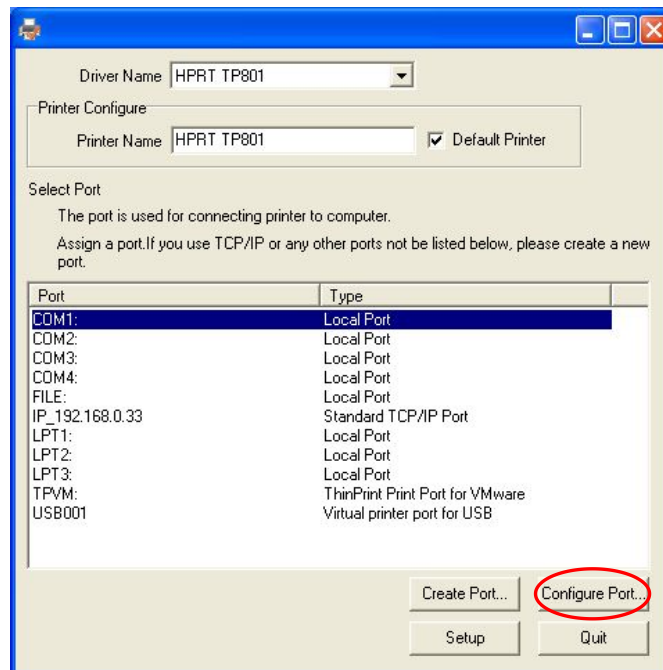
2. Click "Install".



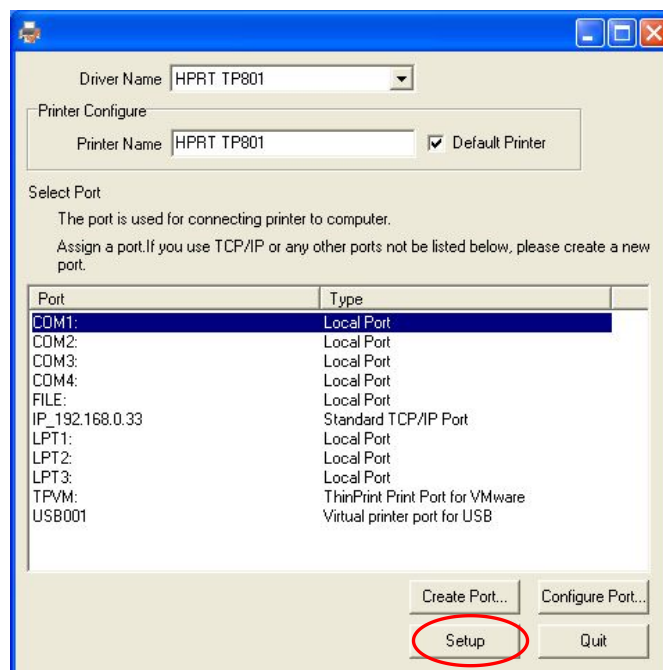
3. Choose the matched type and port. (USBxxx is for USB port, COMx is for serial port, LPTx is for parallel port).

NOTE: If printer is already connected with computer by USB port, it only need to click "Install", then it will be installed automatically.

If choose COM as port,click"Configure Port"and complete the parameter setting.



4.Then click "Setup".




5. Click "Finish". The HPRT TP801 printer driver installed successfully.



6. After installation, the icon will be found in "Start" → "Printers and Faxes".

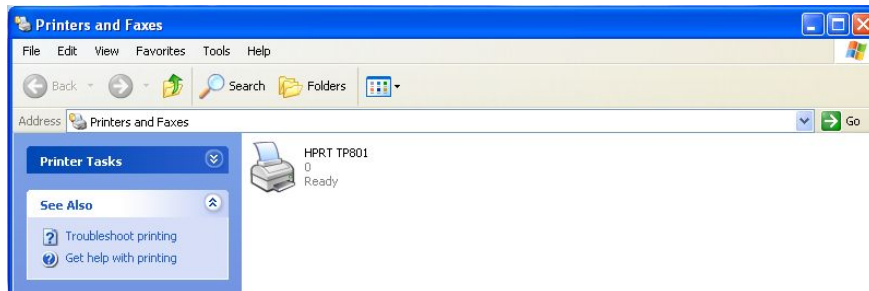


4.9.2 The driver installation instruction of Ethernet and Wi-Fi

 Warning: In different operating system, screen has slight difference. Please operate according to the tips.

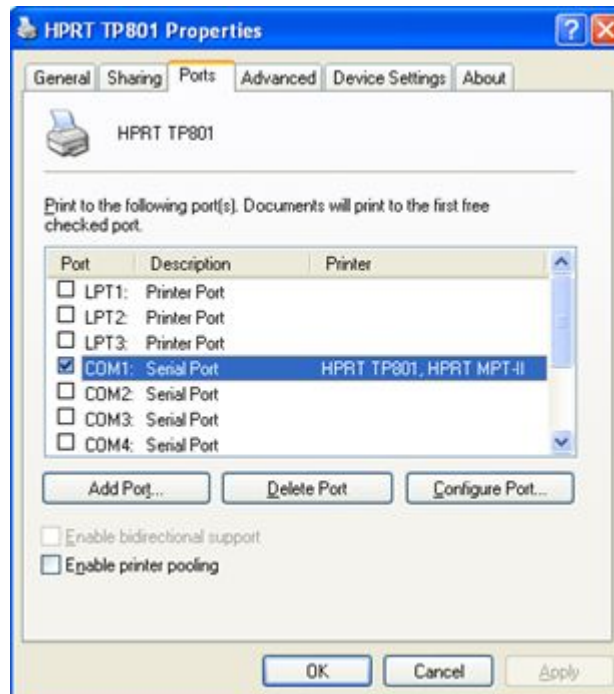
1) Install printer driver program, just as “4.9.1 The driver installation instruction of USB /serial port /parallel interface (Windows XP)”.

1) Click “Start”→ “Printers and Faxes”.

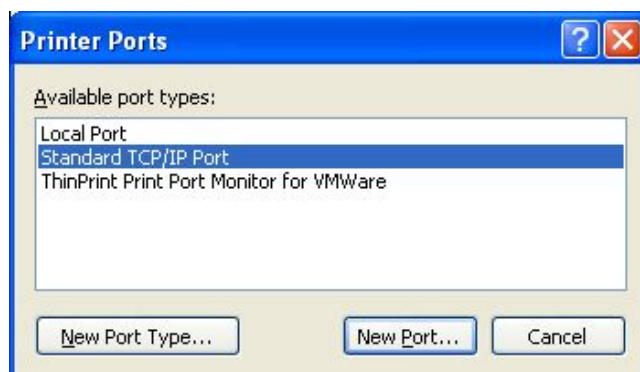


2) Right click “HPRT TP801” and choice “Properties”. Click “Ports”.

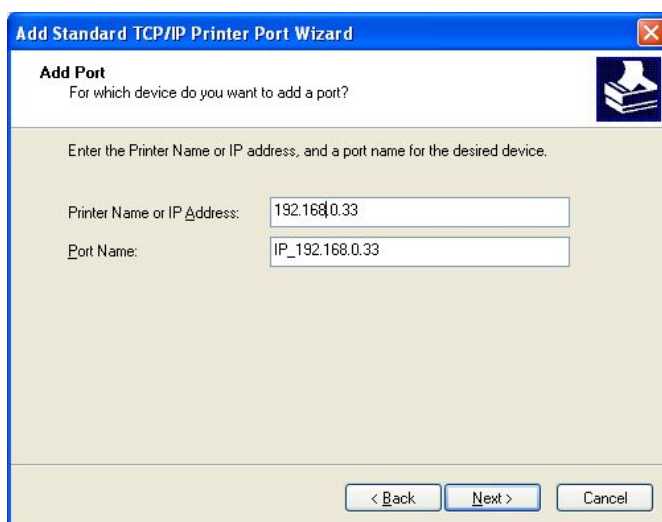
3) Click “Add Port...” button.



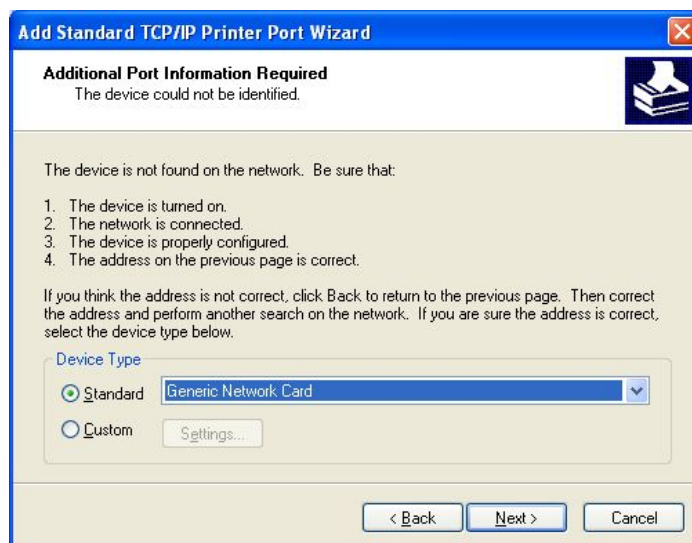
2) Choice “Standard TCP/IP Port” and click “New Port...” button.



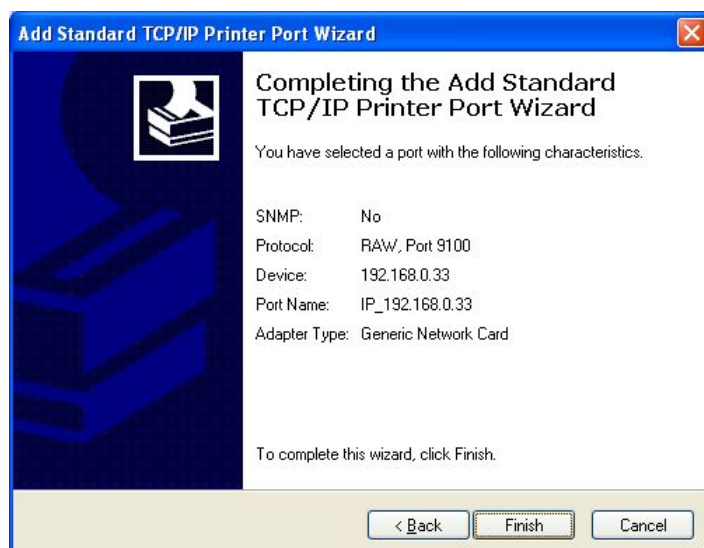
- 3) Finishing the writing of printer name (or IP address) and port name, Clicking “Next >”. “Printer Name or IP Address”: Depends on the display of printer’s self-test page. “Port Name”: Users can customize the name of the port.



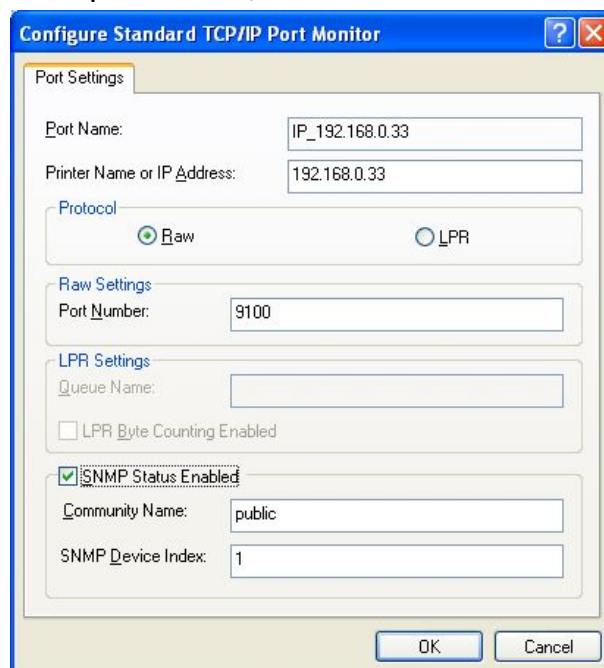
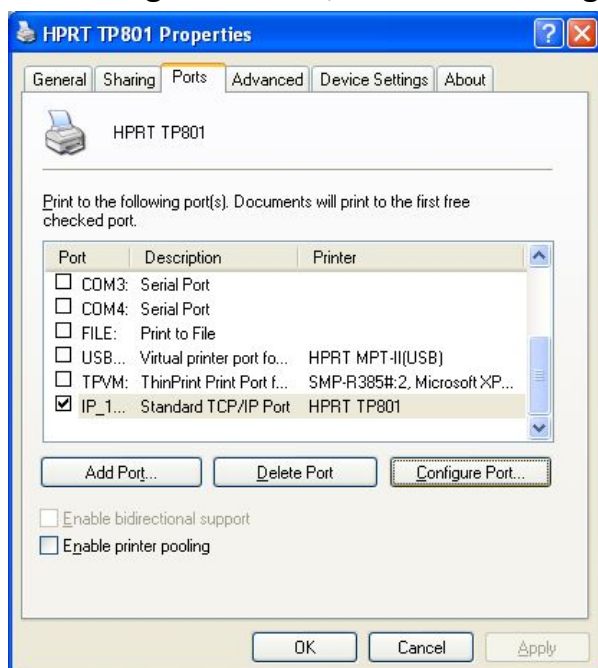
- 4) Clicking “Next >”.



5) Click “Finish”.



6) Click Click “Control Panel”→ “Hardware and Sound”→ “Devices and Printers”., right click “Printer Properties” of printer HPRT TP801 and choice “Ports”→ “Configure Port...”, finish the setting of related parameter, click “OK”.



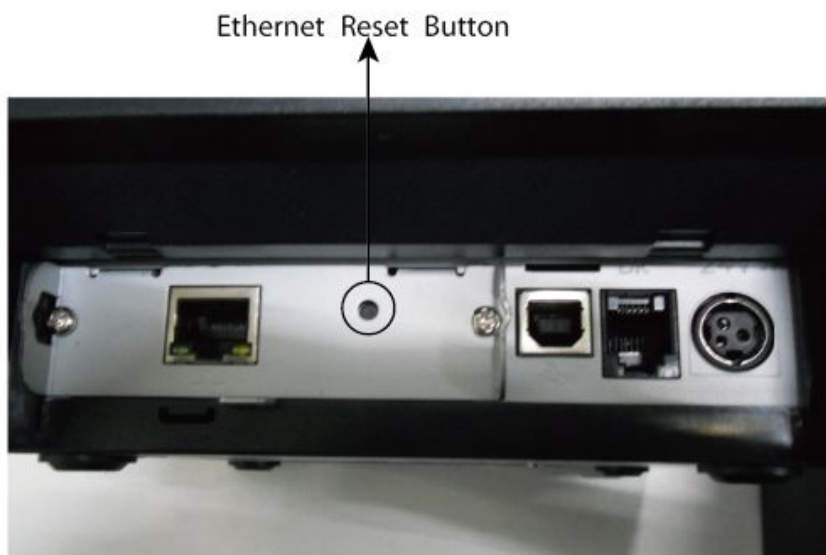
4.9.3 Parameters checking and resetting illustration of the Ethernet and Wi-Fi cards

Ethernet parameter checking:

Press the button on the communication card round hole when the printer is power on, the printer will print the current Ethernet parameters.

Ethernet card parameter resetting:

Press the button on the communication card round hole then power on. After you power on, the parameter on the communication card is renew to the original situation.



Wi-Fi card parameter checking:

Press the button on the interface card round hole when the printer is power on , he printer will print software edition and the TCP/IP setting information of the interface card.

Wi-Fi card parameter resetting:

Press the button on the communication card round hole then power on. he parameter on the communication card is renew to the original situation.



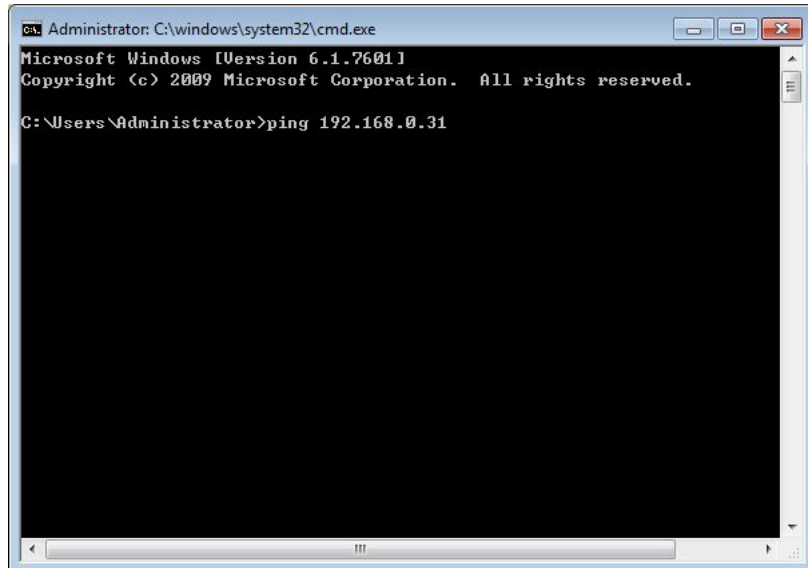
4.9.4 Setting of Ethernet IP

- 1) Ethernet IP can be set through Web page, the operating steps are followed :
- 2) Connect the printer to computer, please refer to the USB, Serial interface and Parallel User Manual 4.9.1.

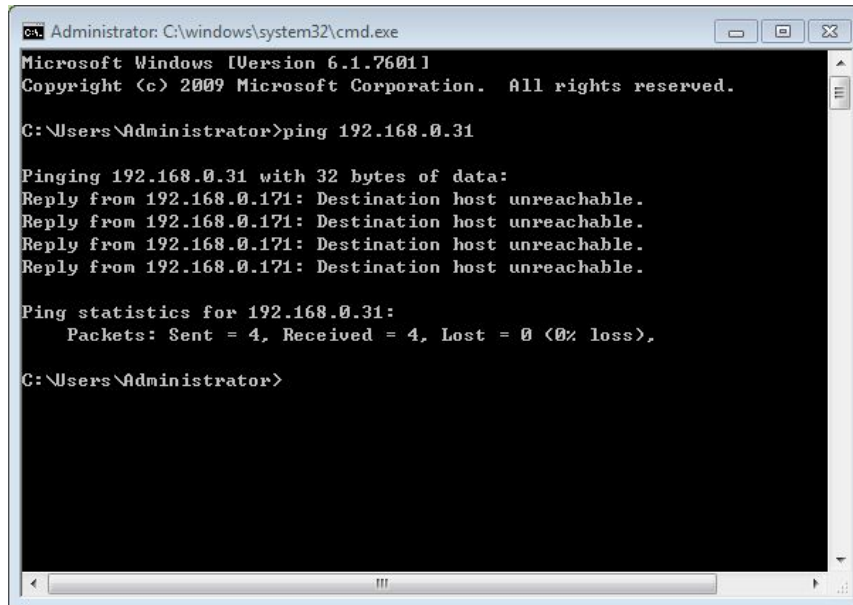
- 3) Connect Ethernet to the printer, please refer to the Ethernet driver installation in User Manual 4.9.2.
- 4) Print self- test page after power on. You can find the IP information in the self-test page IP address line. IP address: 192.168.0.31 //indicates the IP address is 192.168.0.31
- 5) Click Start-Operate in the computer and key in “cmd” in the input box then click Sure, see the following figure:



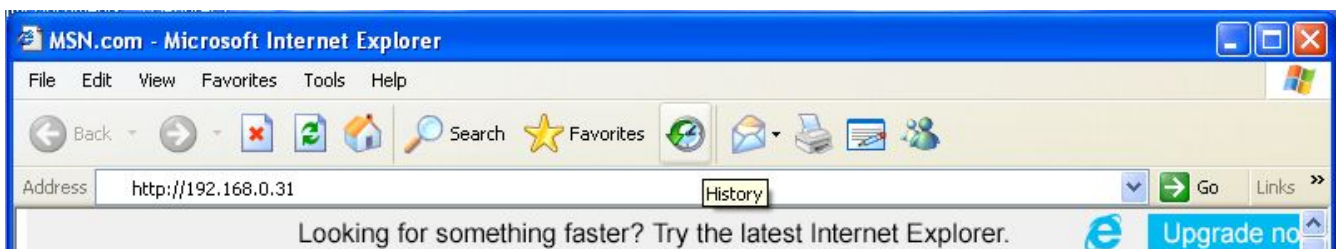
- 7) Key in ping 192.168.0.31 after “Administrator>”, see the following figure:



- 6) Click “Enter”, if the following figure is presented, you can sure that the Ethernet have been connected to the printer, if not presented, please check the connection between the Ethernet and the printer.



7) Then please input <http://192.168.0.31>, in the browser see the following figure:



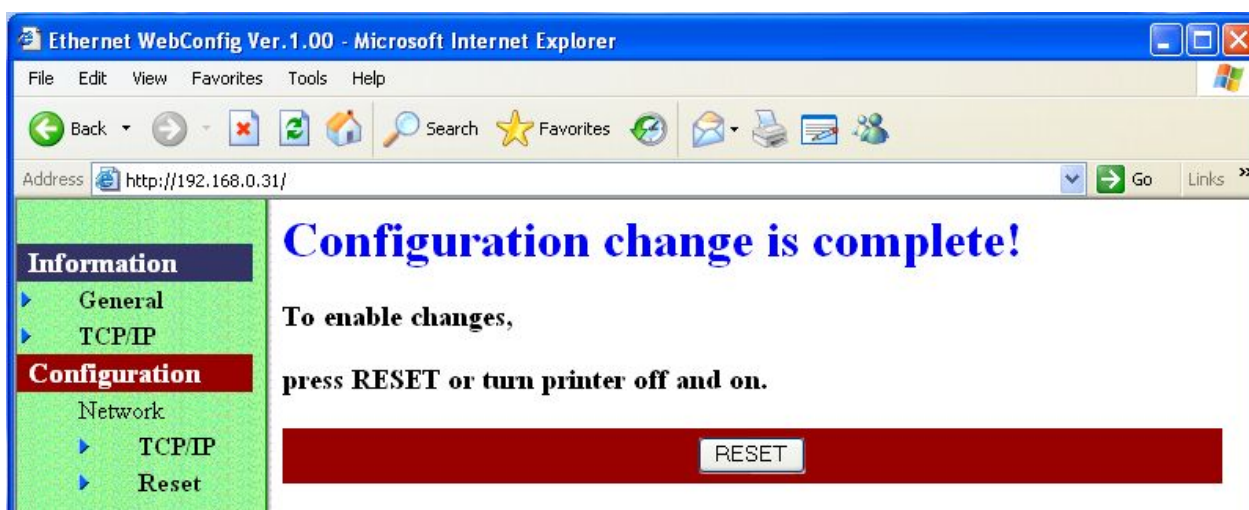
8) Press “Enter”, the browser will skip to the IP setting interface, click Configuration in the left side then enter to the address modify page, 192.168.0.31 is the current IP address, see the following figure:



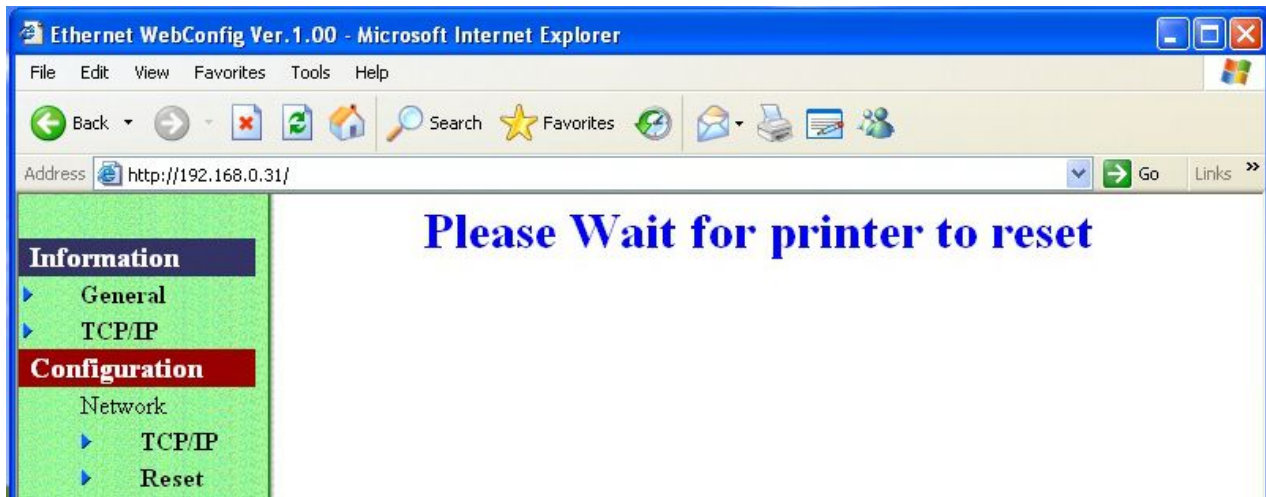
- 9) Modify the IP in the IP Address. For example, modify the IP to 192.168.0.32 , see the following figure :



- 10) Click “SUBMIT” in the middle of the upper page then enter to the following webpage :



- 11) Click “RESET” in the middle of the upper webpage then enter to the following webpage:



- 12) Reboot the printer to effect the new IP, then you can print self-test page and find the new IP address [192.168.xx.xx](#).

4.9.5 Wi-Fi settings

Wi-Fi work mode :

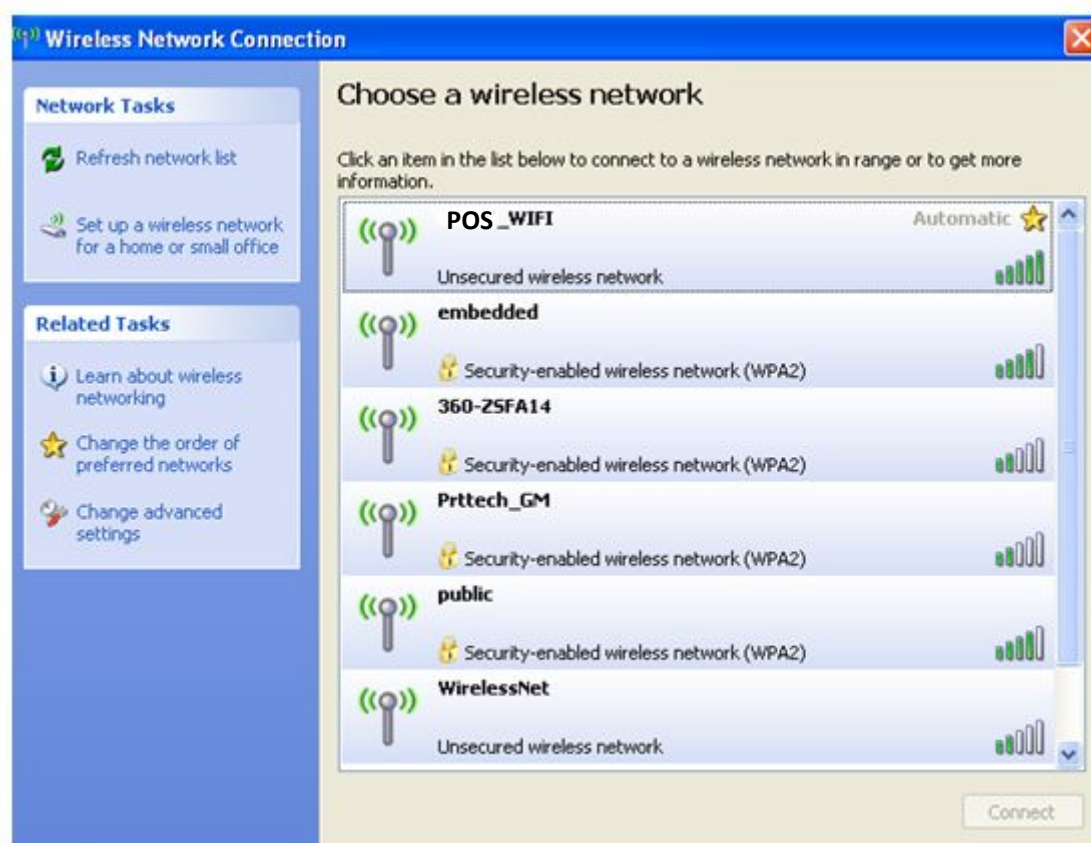
AP mode : when printer under AP mode, it works as an access point.

STA mode: when printer under STA mode, it works as a wireless terminal, which could find and connect to AP.

To allow users to conveniently make WIFI setting change, AP mode has been set to default. User could use PC to connect to the printer by web browser. After entering WIFI setting page, users could switch to STA mode accordingly and make other setting changes, for example IP address, SSID.

1. Entering Wi-Fi setting page :

- 1) Power on the printer.
- 2) Enable Wi-Fi on the PC, and search for "POS_WIFI".



- 3) Open web browser, and enter <http://192.168.0.XXX>(this IP address is printed on the Wi-Fi configuration page).

How to print Wi-Fi configuration page: power on the printer, long press the WIFI reset button (see below picture), then printer will print the configuration page.



NOTE: hold Wi-Fi reset button, at same time power on the printer, Wi-Fi settings will be set to factory default.

Example of Wi-Fi configuration page, which shows the IP address of 192.168.0.33.

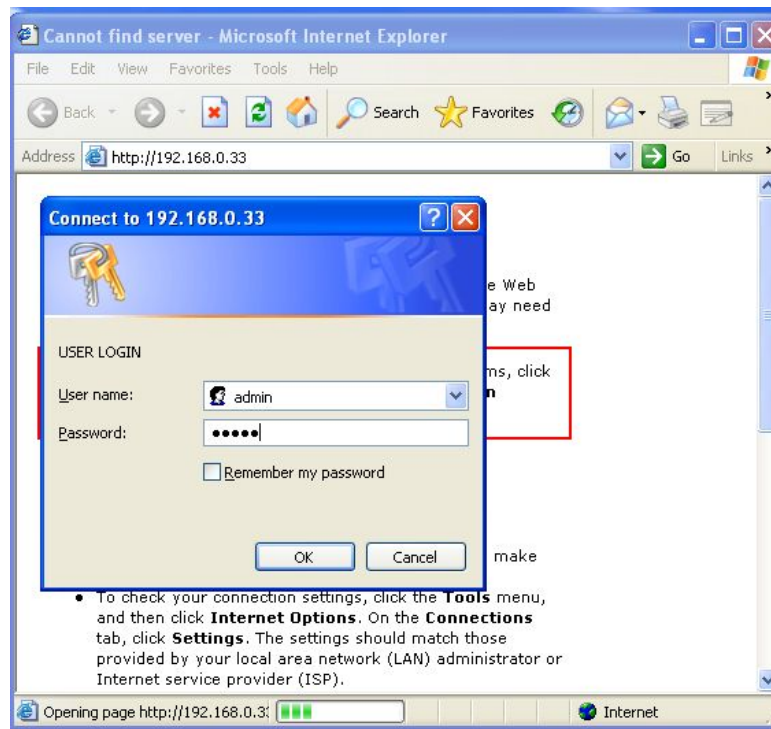
```
*****
Wireless Status
WIFI Work Mode :AP
Firmware      :1.5.5

AP Information
SSID          :POS_WIFI
Encryption    :Disable
Encryption Key :N/A
IP Address    :192.168.0.33
Subnet Mask   :255.255.255.0
DHCP Gateway  :192.168.0.33
MAC Address   :AC:CF:23:20:80:95
DHCP Server   :Enable
*****
```

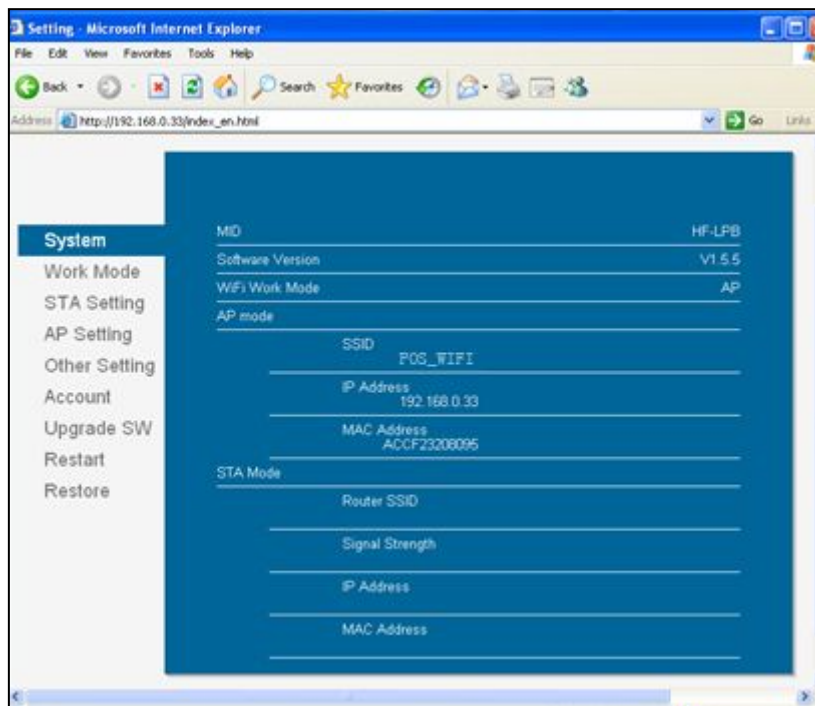
4) Use Internet Explorer or other web browser to open <http://192.168.0.33>,
input

user name: admin;

password: admin

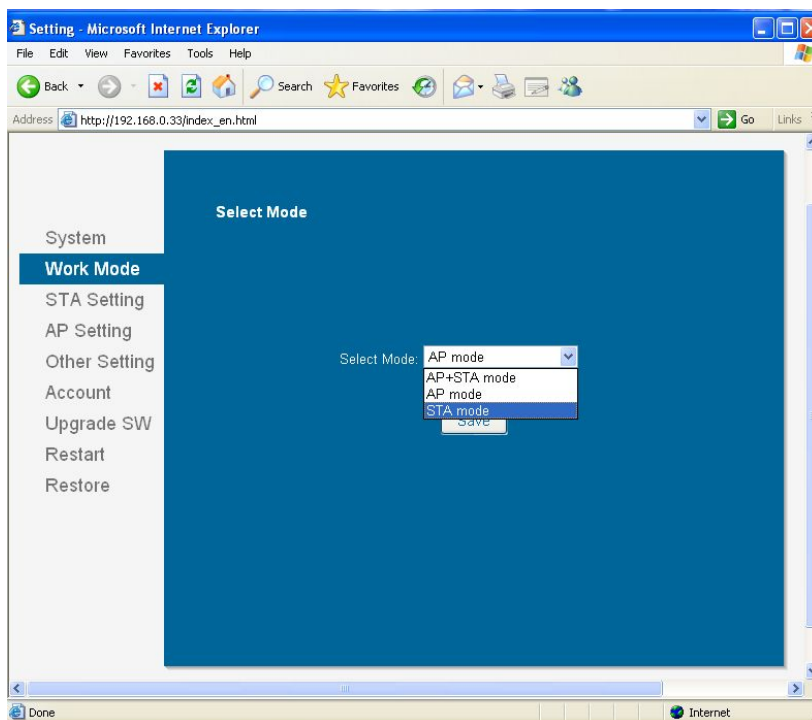


4) After entering user name and password, click on OK to enter Wi-Fi setting page.

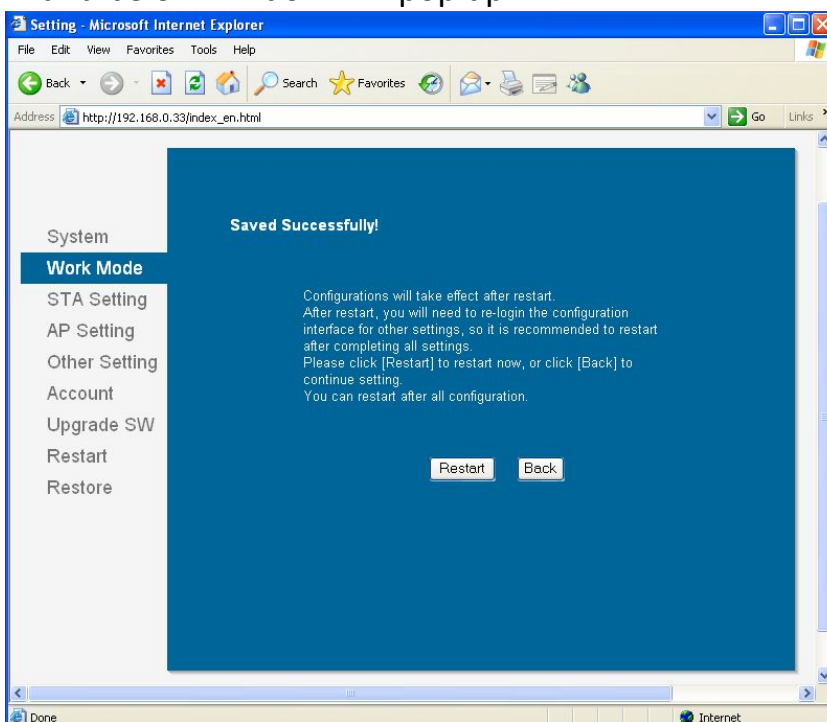


2. STA mode settings

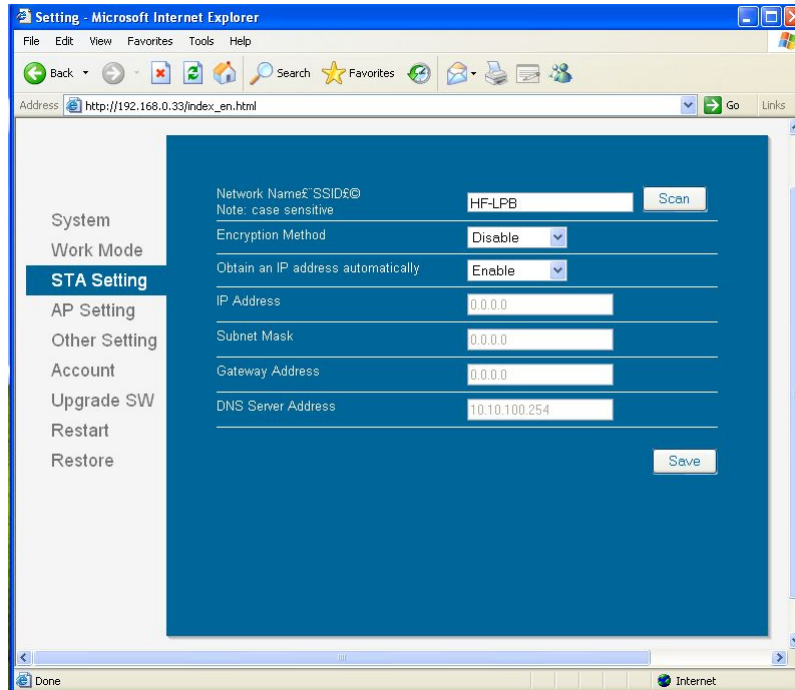
1) Click on "Work Mode" on the left-hand side, rolling down to STA mode.



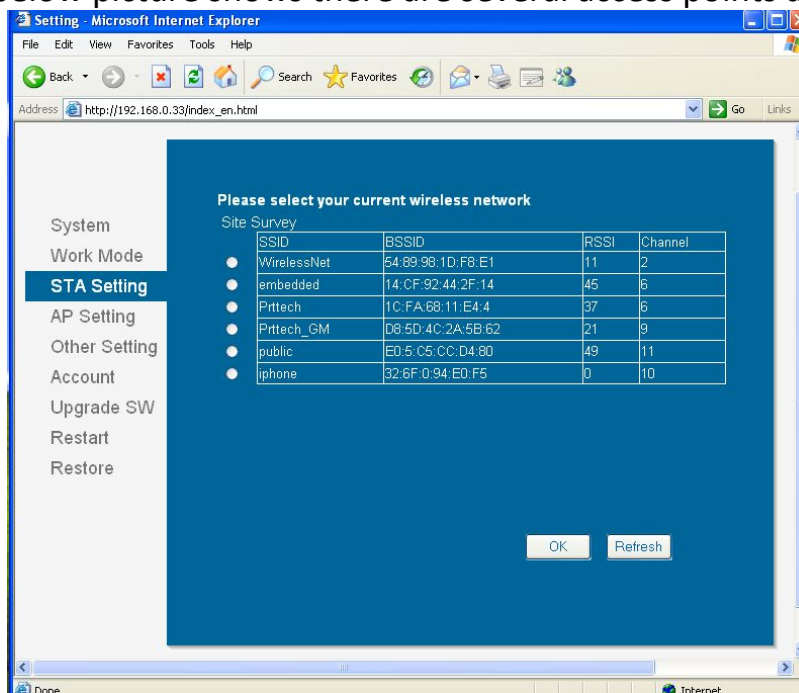
2) Click on “SAVE” and below window will pop up.



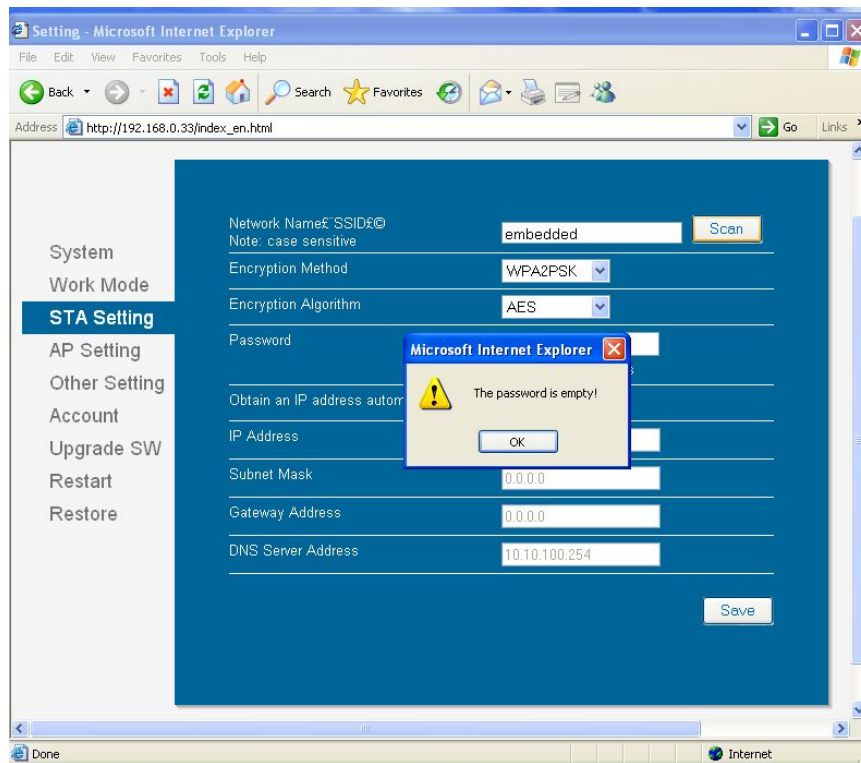
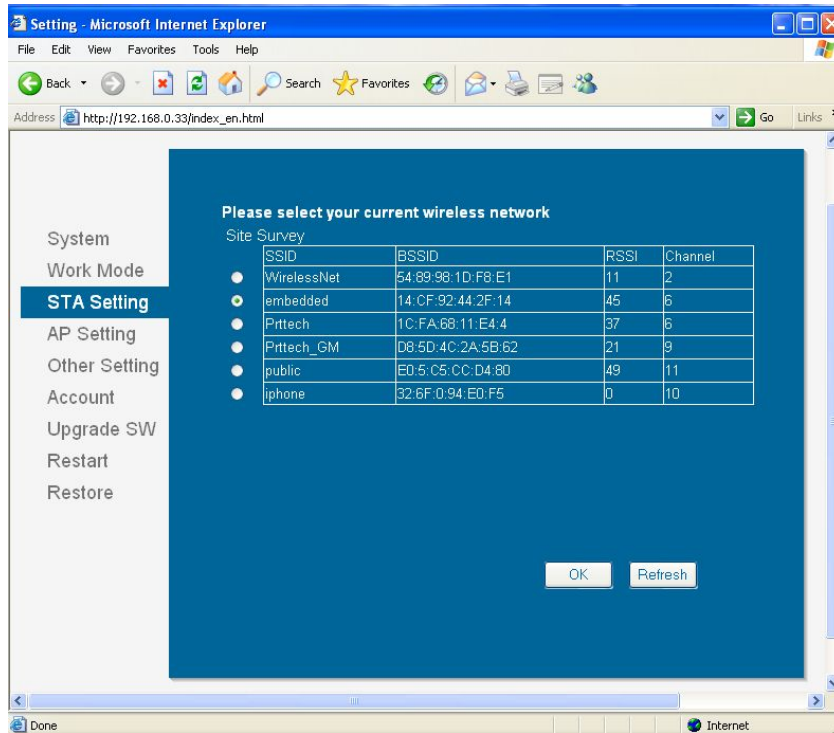
3) Do not click on “RESTART” button at this moment, instead click on the “STA Setting” on the left side to make more STA settings.

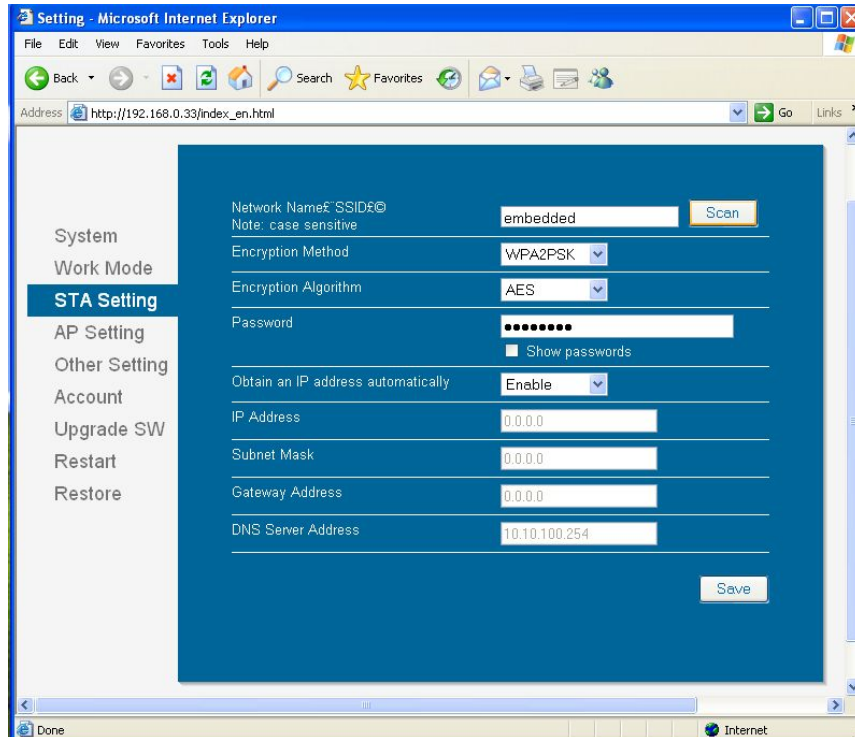


- 4) Click on “SCAN” button to search for access points
For example, below picture shows there are several access points available



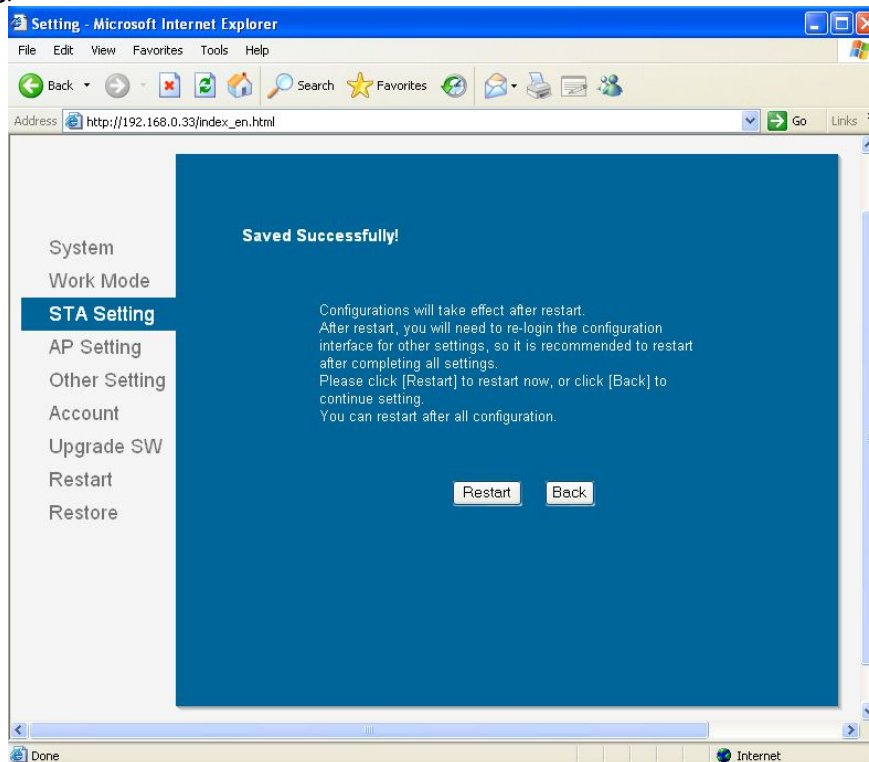
- 5) Choose the correct access point.
For example: “embedded” , see below picture.



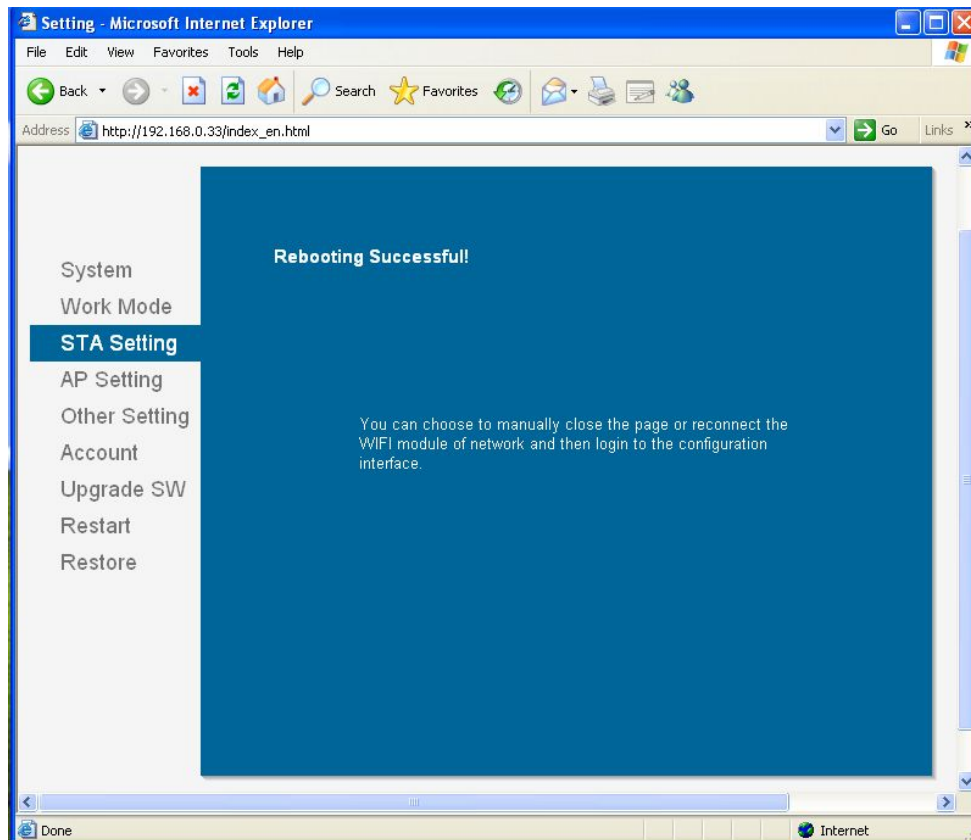


NOTE: settings in the above pictures are just for examples, not for your actual on-site network settings. Please refer to your IT and network engineer for the correct network settings.

6) After setting, click on “SAVE”.



- 7) If users want to make other changes, click on “BACK” , otherwise click on “RESTART” button.

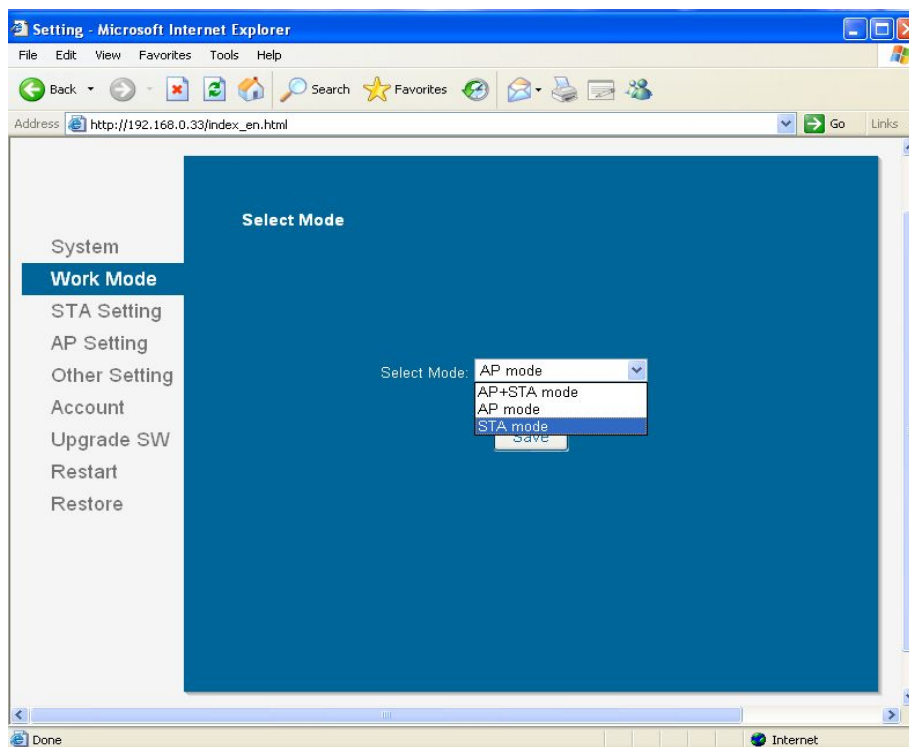


- 8) Above settings will take into effect after power off/on the printer, user could print the Wi-Fi configuration page to check whether settings have been success fully made.

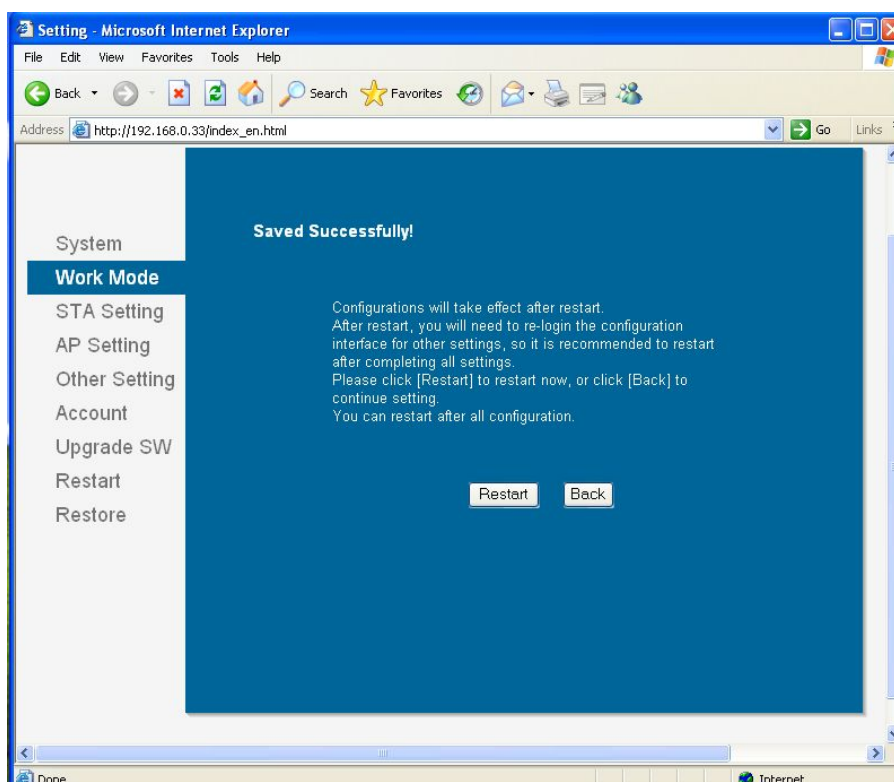
NOTE: after changing to STA mode, access point will assign an IP address to the printer, by printing WIFI configuration page, users could see the IP address, and use it for entering WIFI setting page in the future.

3. AP mode settings:

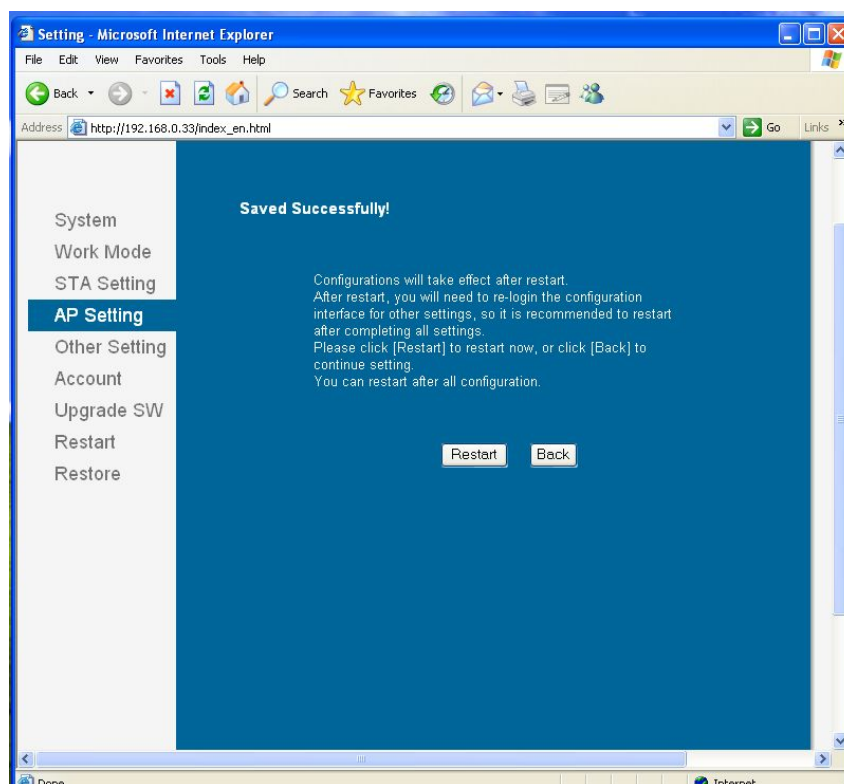
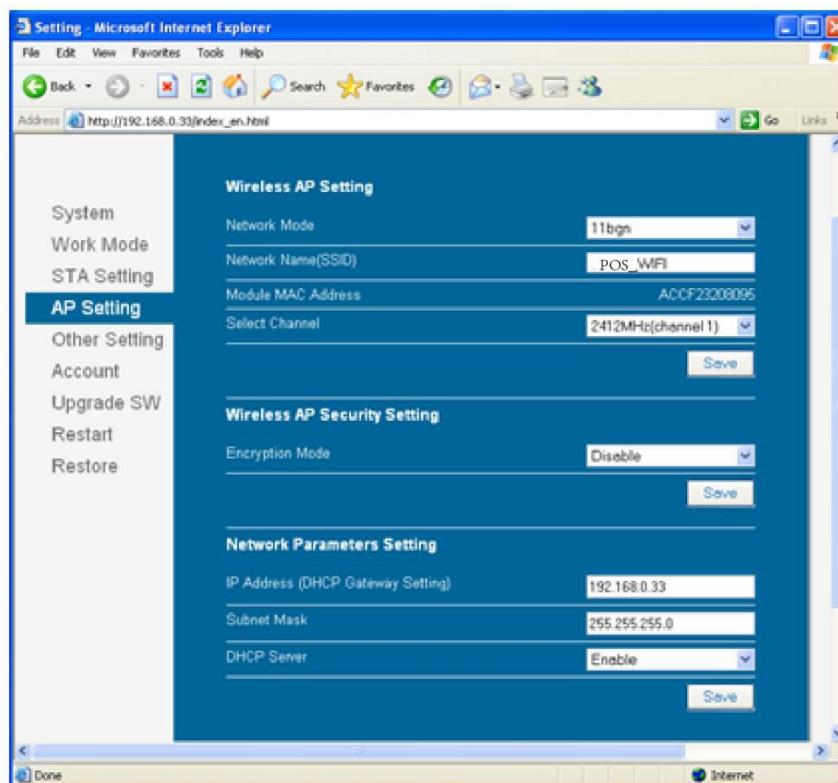
- 1) Click on the “Work Mode”, roll down to “AP mode”, click on “Save”.



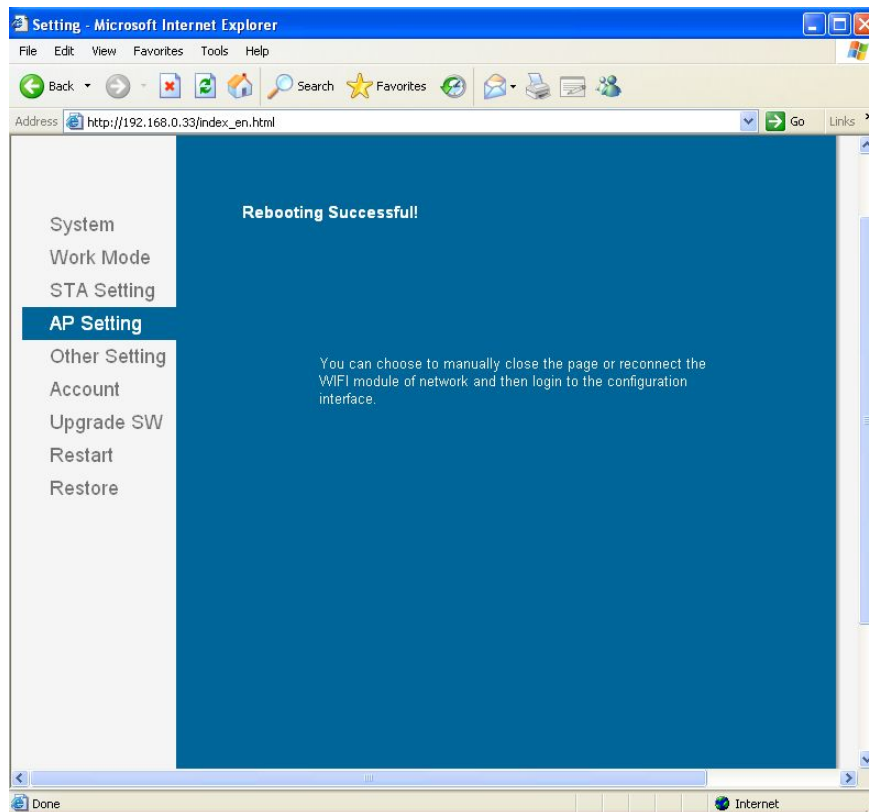
2) Do not click on “Restart”, and instead click on “AP Setting” on the left side.



3) According to user's actual needs to change network mode, SSID, IP address and other settings (please refer to IT or network engineer for the correct settings).



4) Click on “Save” and “restart” button to confirm the settings.



- 5) Power off and power on the printer, above settings will take into effect. Users could print WIFI configuration page to check whether setting have been successfully made.

4.10 Bluetooth

Take TP806 for example.

PDA with Bluetooth interface, laptop and other information terminals can drive the mobile thermal printer TP806. Instructions as follows:

- 1) Power on the printer.
- 2) Primary device search for outer Bluetooth devices.
- 3) If there are some outer Bluetooth devices, choose "TP806".
- 4) Connected to TP806.
- 5) Finish pairing.

Notes:

In pairing, the printer must be turned on.

when pairing, do not set many printers on, otherwise it can't figure out which one succeeds in pairing.

Printer can only connect one primary device each time. After successful pairing, printer can't be connected with other primary device. If it need to connect other device, it should disconnect the connection with the former primary device.

5 Interfaces Signal

Printer TP801/TP805/TP806 supports cash drawer interface and many other various communicate interfaces, such as Serial interface, parallel interface, USB interface, Ethernet interface, Bluetooth interface, Wi-Fi interface. The printer has the communication board with the default USB interface and cash drawer interface, and the other communication boards with the Ethernet interface, parallel interface, RS232 interface are optional.

5.1 Parallel interface

Parallel interface supports protocol with 36 pin CENTRONICS socket.

Pin No.	Signal Source	Signal Definition
1	H	Data latch pulse, latch the data to the printer at the rising edge of the negative pulse
2	H	Data 0(The lowest bit)
3	H	Data 1
4	H	Data2
5	H	Data3
6	H	Data4
7	H	Data5
8	H	Data 6
9	H	Data7 (The highest bit)
10	P	Printer response signal, indicates that the printer has received the last byte of data; A negative pulse of about 1us.
11	P	Busy Signal; The printer is busy; High level indicates that the printer can't receive data.
12	P	PE Signal; paper end signal; High level indicates that the printer is paper end.
13	-	Unconnected
14	-	Unconnected
15	-	Unconnected
16		Logic Ground
17		Frame Ground, separated from logic ground
18	-	Unconnected
19~30		Logic Ground
31	-	Unconnected
32	P	Printer error signal, low level indicates that error occurs in the printer, the error signal will output along with paper end signal.
33		Logic Ground
34~35	-	Unconnected
36	-	Unconnected

Note : H indicates that signal comes from Host computer, P indicates that signal comes from Printer

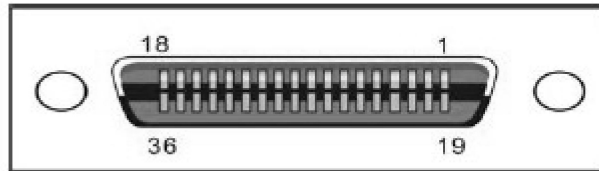


Figure 5.1.1

5.2 USB interface

Pin definition

PIN No.	Signal name	Classic wire color
1	VBUS	Red
2	D-	White
3	D+	Green
4	GND	Black

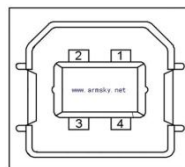


Figure 5.2.1

5.3 Power Supply interface definition

1) Pin definition

PIN No.	Signal Name
1	+24V
2	GND
3	N.C
SHELL	F.G

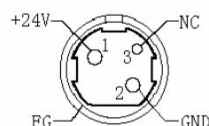


Figure 5.3.1

2) Interface type

Printer end-Unetop DC-002 or similar products, user end-Unetop DC-002 or similar products

5.4 Cash Drawer interface signal

1) Electrical characteristics

- Driving voltage : DC 24 V
- Driving current : maximum 0.8 A (In 510 ms)
- Drawer check signal : “L” = 0 ~ 0.5 V “H” = 3 ~ 5 V

2) Cash Drawer interface sing RJ-11 connector

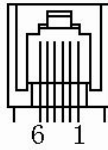


Figure 5.4.1

• Interface signal definition

Pin No.	Signal	Function
1	FG	Frame Ground
2	DRAWER 1	Drawer kick-out drive signal 1
3	DRSW	Drawer open/close signal
4	VDR	Drawer driving source
5	DRAWER 2	Drawer kick-out drive signal 2
6	GND	GND



Note :

- Strictly prohibit to hot plug the plug.
- When arranging the line of communication, you have to avoid paralleling with the strong current.
- you have to use the shielded communication line.

5.5 Serial interface and Ethernet interface

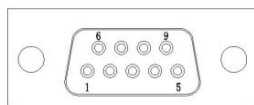
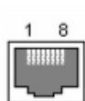
Printer TP805 serial interface is compatible with RS-232 standard, with 9 pin (D hole type) socket.

Serial interface definition

PIN No.	Signal definition
PIN 1	CD
PIN 2	TD
PIN 3	RD
PIN 4	DSR
PIN 5	GND
PIN 6	DTR
PIN 7	CTS
PIN 8	RTS
PIN 9	RI

Ethernet interface definition

PIN No.	Signal definition
1	TX+
2	TX-
3	RX+
4	n/c
5	n/c
6	RX-
7	n/c
8	n/c



TP805

Printer TP801 and TP806 serial interface are all compatible with RS-232 standard, with 25 pin (D hole type) socket.

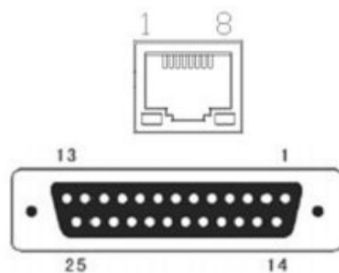
User can gain the setting of interface via printing configuration sample; the default setting of serial interface is as follow, 9600 bps (baud rates), 8 bit (data bit), 1 bit (stop bit), no parity, support RTS/CTS handshaking protocol.

Serial interface definition

PIN No.	Signal definition
PIN1	Frame Ground
PIN2	TXD
PIN 3	RXD
PIN 4	RTS
PIN 5	Unconnected
PIN 6	DSR
PIN 7	GND
PIN 8~19	Unconnected
PIN 20	DTR
PIN 21~25	Unconnected

Ethernet interface definition

PIN No.	Signal definition
1	TX+
2	TX-
3	RX+
4	n/c
5	n/c
6	RX-
7	n/c
8	n/c



TP801/TP806

6 Troubleshooting

Your printer is very reliable, but occasionally problems may occur. This chapter provides information on some common problems you may encounter and how to solve them. If you encounter problems that you can not resolve, contact your dealer for assistance

6.1 Printer not working

Problem description	Probable reason	Solution
LED not light, printer not working	Printer No power	Connecting the power supply
	Printer not on	Turn on the printer
	Circuit board broken	Contact with the dealer

6.2 LED indicator on the control panel and beeper alarm

Problem description	Probable reason	Solution
Paper LED always on	Paper near end	The roll paper is near end, the printer can work normally
Error LED always on and beeper alarms	Printer Cover open	Close the printer cover
Paper Error LED always on and beeper alarms	Paper end	Reload the roll paper
Error LED blinks and beeper alarms	Thermal print head overheated	Turn the printer off and resume when it cools
	overvoltage	Print with specified voltage
	Low-voltage	Print with specified voltage

6.3 Troubles occur during printing

Problem description	Probable reason	Solution
Coloured stripe in the paper	Paper near end	Reinstall the roll paper
Blurred printing or spot	Incorrect roll paper installation	Check if the roll paper is installed
	Unqualified roll paper	Use recommended thermal roll paper
	Dirty thermal head or print roller	Clean the thermal head or print roller
	Low print density	Increase the print density level
Paper Jam	Paper strike	Open the printer cover, check the paper path and remove jammed paper
Vertical print words missing	Dirty thermal head or print roller	Clean the thermal head or print roller
	Thermal head damaged	Contact your dealer for assistance

6.4 Problems emerge during the paper cutting processes

Problem description	Probable reason	Resolution
Cutter jam, the movable cutter cannot back	Cutter abrasion, insufficient cutting	replace the cutter
	Worm gear and worm wheel abrasion	Replace the worm gear and worm wheel
	Motor burnt	Replace the motor
	Paper scraps	Clean the paper scraps on the transmission system
Insufficient cutting	Cutter edge abrasion, paper too thick	Replace the cutter
Paper jam	Thermal printer head over heat	Reduce the density of printing
	Driving too fast	Reduce the printer speed to the limit of thermal printer head
	Wrong paper feeding position	Put the paper parallel with the paper mount and insert into the space between platen roller and the thermal printer head

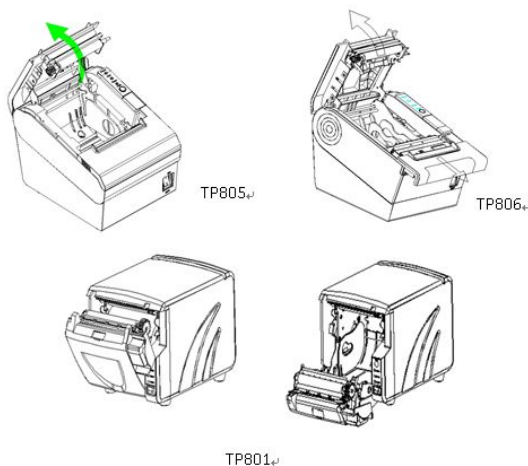
6.5 Removing Jammed Paper



Warning: Do not touch the thermal print head because it becomes very hot after printing.

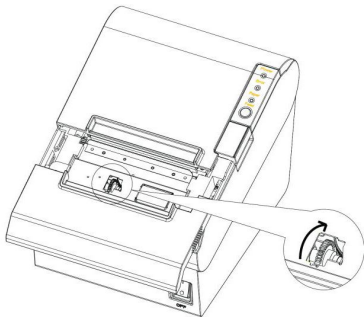
If the top cover(TP805/TP806)can be opened,operate it according to the next steps.

- 1)Turn off the printer and press open cover button.
- 2)Remove jammed paper, reinstall the roll, and close the cover..

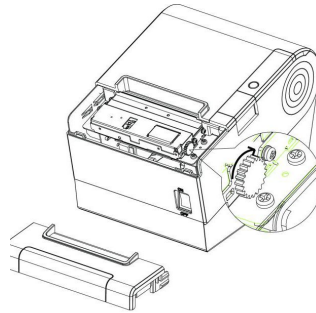


If the auto cutter jam occurs on printer TP805 and TP806 and you cannot open the printer cover, open the cutter cover as shown on the left below.

- 1) Turn the printer off and open the front cover.
- 2) Turn the knob until cutter return to the normal position (tip tag).
- 3) Close the front cover.
- 4) Open the top cover and remove jammed paper.



TP805



TP806